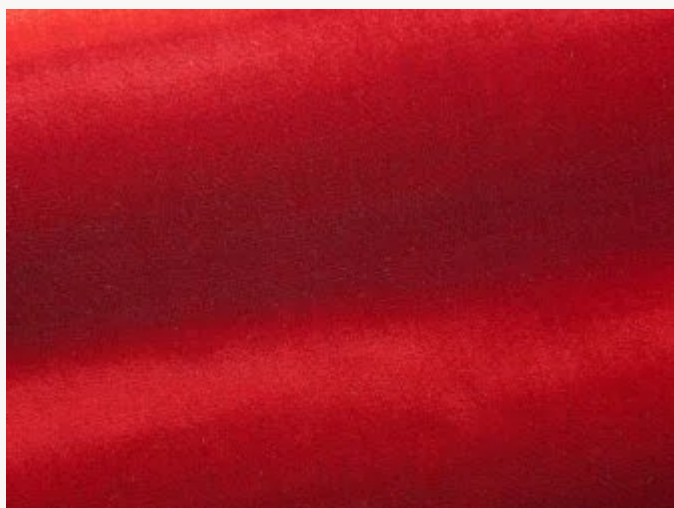


I6604008 ORGANZINO

Silk is a luxurious material par excellence, long compared to gold in its richness. Silk is among the most durable of natural materials, its natural brilliance, extremely soft texture and delicate thread have enthralled us for more than 4,000 years. Manufacturing silk thread requires true expertise, as well as highly specific knowledge and techniques. However, its quality primarily depends on the filaments extracted from the silk cocoons as there are various qualities of silk. To make ORGANZINO velvet, only the best quality cocoons (grade A) are used. They come from matured bombyx mûri silkworms that are fed exclusively on white mulberry leaves to produce a silk of remarkable quality.






What makes ORGANZINO velvet such an exceptional product is the rigorous selection of the silk cocoons used in its production, as well as the flawless expertise of our Italian spinner, who transform silk filaments into what is known as organza thread. Organza is the most precious type of silk thread, formed from two single threads in a process that shapes the silk so as to better reveal its natural shine. Highly regular, it also has the best dye affinity, thus obtaining the deepest and most intense colors.

I6604008 - Rubis



Laize : 144,00 cm / 56,69 inch

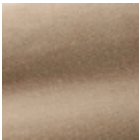
Fadini Borghi

PERFORMANCE	High Rub Test
TYPE	Plains - Velvets
USE	Moderate use
MARTINDALE	>100.000 T
COMPOSITION	63 % Silk - 27 % Cotton - 10 % Polyester
SALES UNIT	Available per meter/yard
WIDTH	144 cm / 56,69 inch
REPEAT	Free match
WEIGHT	691 gr / ml
CARE	    
CERTIFICATIONS	EN1021-1-2 BS5852 Cigarette & match test NFPA 260-Class 1
NOTES	Organzine silk Can be embossed
INFORMATION	pile 100% silk
BOOK	I99791802

8 Colors



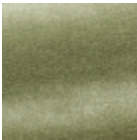
I6604001
Cristal



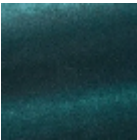
I6604002
Perle



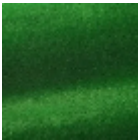
I6604003
Vison



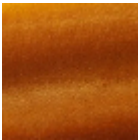
I6604004
Opaline



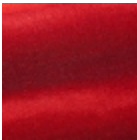
I6604005
Tourmaline



I6604006
Malachite



I6604007
Ambre



I6604008
Rubis