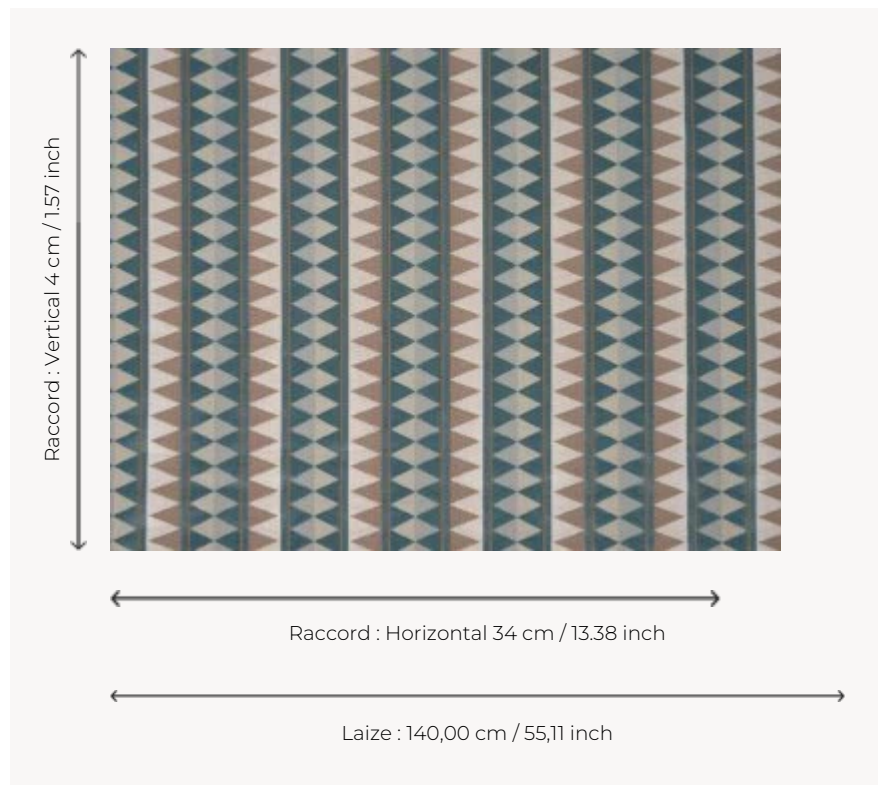


## I6631001 AGOSTINO

Magnificent ciselé velvet drawing zigzags of triangles with silky reflections, in a balance of bright colors.

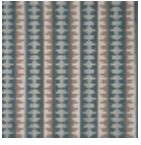
### I6631001 - Fontana



### Fadini Borghi

<b>PERFORMANCE</b>	Martindale > 25 000 T
<b>TYPE</b>	Jacquards - Velvets
<b>USE</b>	Normal use
<b>MARTINDALE</b>	>100.000 T
<b>COMPOSITION</b>	61 % Viscose - 39 % Cotton
<b>SALES UNIT</b>	Available per meter/yard
<b>WIDTH</b>	140 cm / 55,11 inch
<b>REPEAT</b>	H: 34 cm - 13,38 inch V: 4 cm - 1,57 inch Straight repeat
<b>WEIGHT</b>	770 gr / ml
<b>CARE</b>	
<b>CERTIFICATIONS</b>	BS5852 Cigarette test
<b>INFORMATION</b>	pile 100% viscose Patina with use

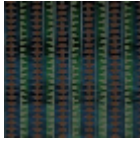
## 4 Colors



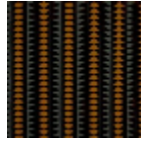
I6631001  
Fontana



I6631002  
Ambra



I6631003  
agostino reale



I6631004  
Sfumato