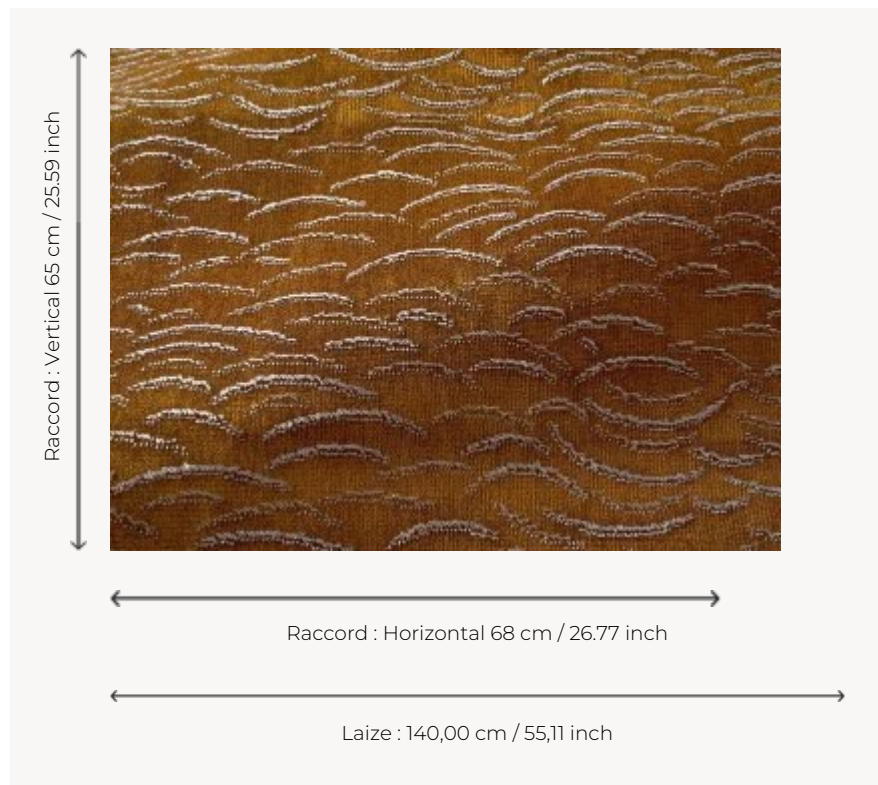


I6635001 RAFAEL

Elegant velvet whose flattened pile creates a multitude of undulating waves on the surface of the water.

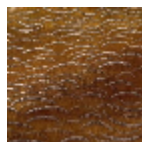
I6635001 - Ocra



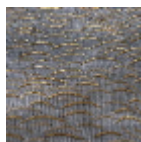
Fadini Borghi

PERFORMANCE	High Rub Test
TYPE	-
USE	Normal use
MARTINDALE	60.000 T
COMPOSITION	55 % Viscose - 45 % Cotton
SALES UNIT	Available per meter/yard
WIDTH	140 cm / 55,11 inch
REPEAT	H: 68 cm - 26,77 inch V: 65 cm - 25,59 inch Straight repeat
WEIGHT	763 gr / ml
CARE	
CERTIFICATIONS	EN1021-1-2 in conjunction with suitable combustion modified foam
INFORMATION	Patina with use

2 Colors



I6635001
Ocra



I6635002
Onda