

I6654001 ARTEMIDE

Embroidery depicting pretty pastoral scenes where deer and butterflies flit among wildflowers in an orderly Directoire-style setting, a period when antique styles were in vogue. The original document is a woodblock-printed wallpaper dating from the late 18th century and preserved in Maison Pierre Frey's archives.

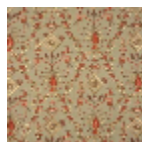
I6654001 - SAGGIO



Fadini Borghi

TYPE	Embroideries
COMPOSITION	56 % Linen - 37 % Viscose - 7 % Polyester
SALES UNIT	Available per meter/yard
WIDTH	130 cm / 51,18 inch
REPEAT	H: 65 cm - 25,59 inch V: 64 cm - 25,19 inch Straight repeat
WEIGHT	637 gr / ml
CARE	

1 Colors



I6654001
SAGGIO