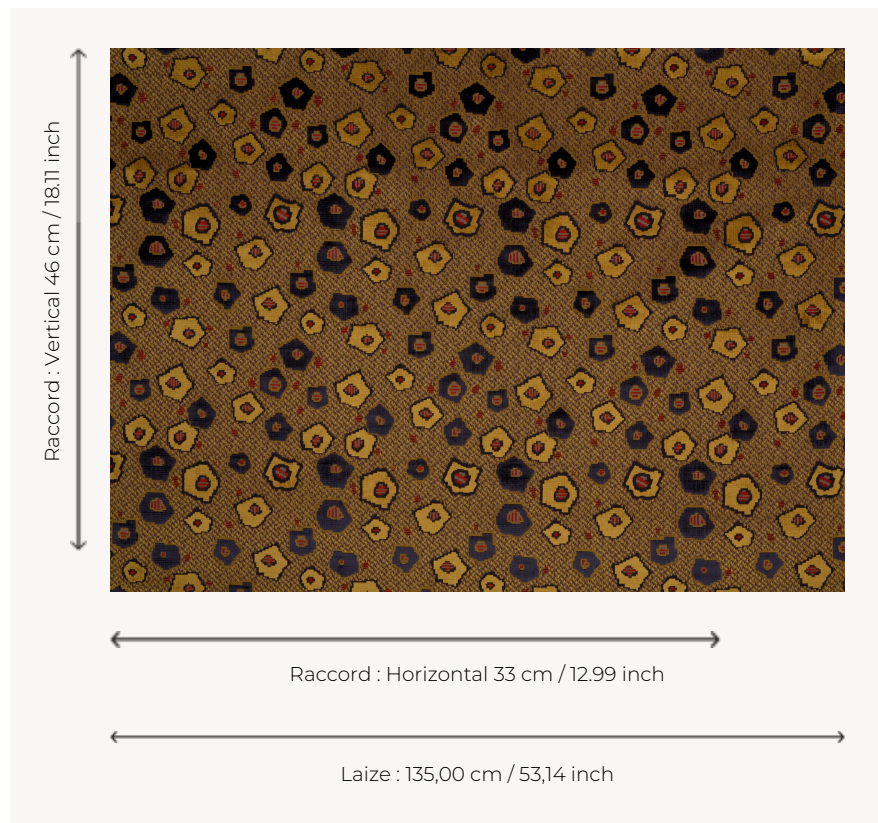


# I6661001 PITTI

PITTI embodies the refinement of ciselé velvet with hints of panther skin, a timeless motif combining sophistication and elegance.

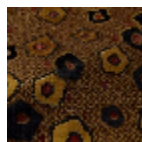
## I6661001 - MARRONE DORATO



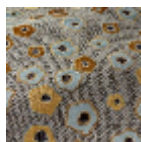
## Fadini Borghi

|                       |   |
|-----------------------|---|
| <b>PERFORMANCE</b>    | Martindale > 25 000 T   |
| <b>TYPE</b>           | Epinglé velvets - Jacquards - Velvets                             |
| <b>USE</b>            | Moderate use  |
| <b>MARTINDALE</b>     | 60.000 T  |
| <b>COMPOSITION</b>    | 61 % Viscose - 31 % Cotton - 8 % Polyester                        |
| <b>SALES UNIT</b>     | Available per meter/yard  |
| <b>WIDTH</b>          | 135 cm / 53,14 inch   |
| <b>REPEAT</b>         | H: 33 cm - 12,99 inch<br>V: 46 cm - 18,11 inch<br>Straight repeat |
| <b>WEIGHT</b>         | 1012 gr / ml  |
| <b>CARE</b>           |   |
| <b>CERTIFICATIONS</b> | BS5852 Cigarette test   |
| <b>INFORMATION</b>    | pile 100% viscose   |

## 2 Colors



I6661001  
MARRONE  
DORATO



I6661002  
VERDE  
AZZURO