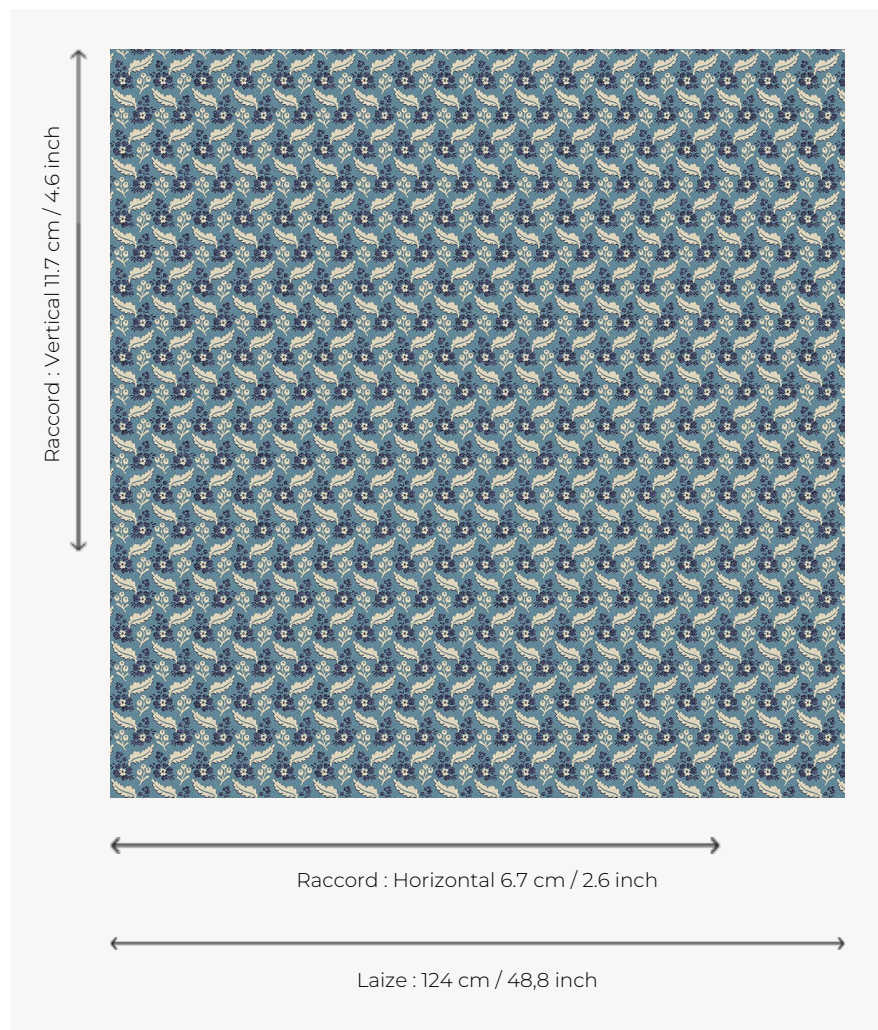


# L2141\_FEUILLES\_DE\_CHENE\_N3010\_N3004\_FE FEUILLES DE CHENE

Toile de Tours reproducing the druggets in fashion during the second half of the 18th century,  
commonly used in men's fashion.

## L2141\_FEUILLES\_DE\_CHENE\_N3010\_N3004\_FE -



## Le manach

|                          |  |
|--------------------------|--|
| <b>TYPE</b>              | Toiles de Tours  |
| <b>DESIGN STRUCTURE</b>  | 2 Colors, 1 Ground   |
| <b>RECOMMENDED YARNS</b> | Nacré<br>Chenille<br>Bouclette   |
| <b>SPLIT YARNS</b>       | Yes  |
| <b>SALES UNIT</b>        | Available per meter  |
| <b>WIDTH</b>             | 124 cm env. / approx 48,80 inch  |
| <b>REPEAT</b>            | H: 6 cm env. - approx 2,60 inch<br>V: 11 cm env. - approx 4,60 inch<br>Straight repeat |

### CARE



### NOTES

Woven in Pierre Frey's workshop in northern France. Living Heritage Mill.

## 3 Colors



L2141\_FEUILLE  
S\_DE\_CHENE\_  
B02\_C525\_FI



L2141\_FEUILLE  
S\_DE\_CHENE\_  
B2\_B13\_FI



L2141\_FEUILLE  
S\_DE\_CHENE\_  
N3010\_N3004\_  
FE