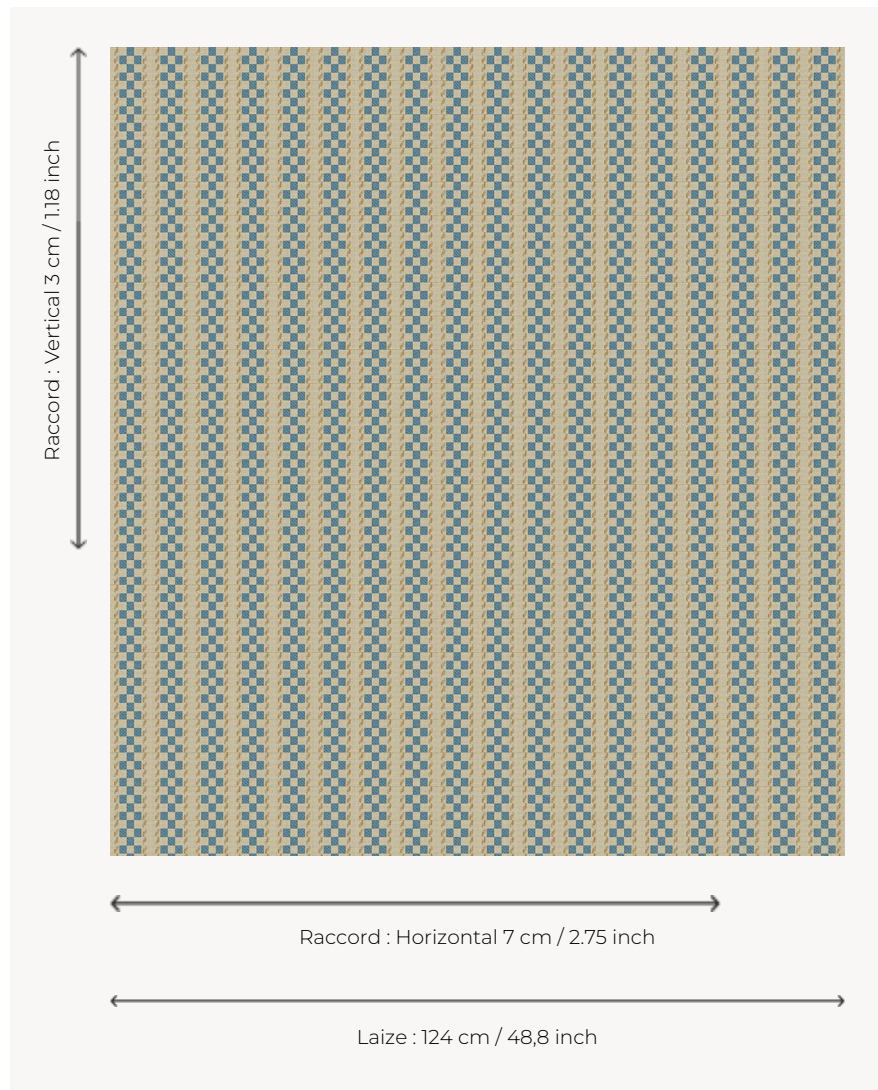


# L3077\_ALESIA\_B65\_N3025\_FG ALESIA

Checkerboard stripe underlined by a fine contrasting edging.

L3077\_ALESIA\_B65\_N3025\_FG -



## Le manach

<b>TYPE</b>	Toiles de Tours
<b>DESIGN STRUCTURE</b>	2 Colors, 1 Ground
<b>RECOMMENDED YARNS</b>	Nacré Chenille Bouclette
<b>SPLIT YARNS</b>	Yes
<b>SALES UNIT</b>	Available per meter
<b>WIDTH</b>	124 cm env. / approx 48,80 inch
<b>REPEAT</b>	H: 7 cm env. - approx 2,75 inch V: 3 cm env. - approx 1,18 inch Straight repeat

### CARE



### NOTES

Woven in Pierre Frey's workshop in northern France. Living Heritage Mill.

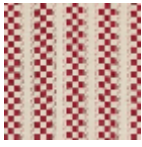
# 5 Colors



L3077\_ALESIA\_  
B28\_B54\_FE



L3077\_ALESIA\_  
B65\_N3025\_FG



L3077\_ALESIA\_  
N3014\_N3015\_  
FE



L3077\_ALESIA\_  
N3121\_N3013\_F  
G



L3077\_ALESIA\_  
N3133\_N3013\_F  
E