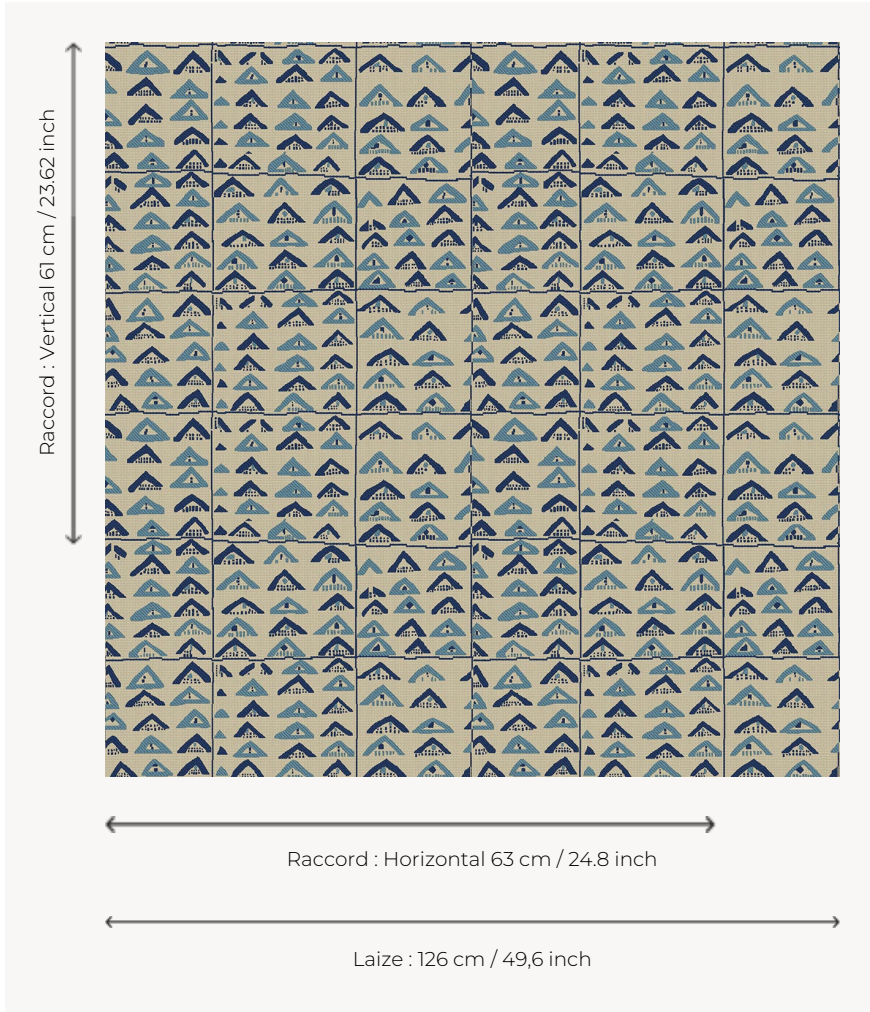


L3566_NIGER_B02_B92_B93_FE NIGER

African-inspired fabric edited by Le Manach for its first collection of toile Tours in 1928 reproducing Kuba velvets from Congo, so called because of the use of curly raffia yarns, distant echoes of Italian chiselled velvets.

L3566_NIGER_B02_B92_B93_FE -



Le manach

TYPE	Toiles de Tours
DESIGN STRUCTURE	2 Colors, 1 Ground
RECOMMENDED YARNS	Nacré Chenille Bouclette
SPLIT YARNS	Yes
SALES UNIT	Available per meter
WIDTH	126 cm env. / approx 49,60 inch
REPEAT	H: 63 cm env. - approx 24,80 inch V: 61 cm env. - approx 23,62 inch Straight repeat
CARE	
NOTES	Woven in Pierre Frey's workshop in northern France. Living Heritage Mill.

1 Colors



L3566_NIGER_
B02_B92_B93_
FE