

# L3699\_BEHANZIN\_C541\_C539\_C508\_FG BEHANZIN

Jacquard reproducing the pattern of a Kuba velvet from Congo, so called because of the use of looped raffia threads, a distant reminiscence of the loops found in Italian velvets.

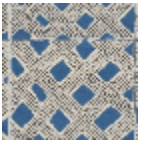
## L3699\_BEHANZIN\_C541\_C539\_C508\_FG -



## Le manach

<b>TYPE</b>	Toiles de Tours
<b>DESIGN STRUCTURE</b>	2 Colors, 1 Ground
<b>RECOMMENDED YARNS</b>	Nacré Chenille Bouclette
<b>SPLIT YARNS</b>	Yes
<b>SALES UNIT</b>	Available per meter
<b>WIDTH</b>	125 cm env. / approx 49,21 inch
<b>REPEAT</b>	H: 63 cm env. - approx 24,80 inch V: 65 cm env. - approx 25,59 inch Straight repeat
<b>CARE</b>	
<b>NOTES</b>	Woven in Pierre Frey's workshop in northern France. Living Heritage Mill.

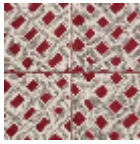
# 7 Colors



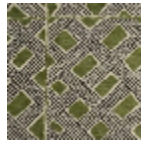
L3699\_BEHAN  
ZIN\_B21\_B38\_F  
E



L3699\_BEHAN  
ZIN\_B73\_B14\_F  
E



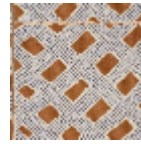
L3699\_BEHAN  
ZIN\_C527\_B14\_  
FE



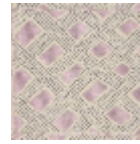
L3699\_BEHAN  
ZIN\_C541\_C539  
\_C508\_FG



L3699\_BEHAN  
ZIN\_C544\_B41  
\_FE



L3699\_BEHAN  
ZIN\_N3013\_N31  
20\_FE



L3699\_BEHAN  
ZIN\_N3114\_N31  
24\_FE