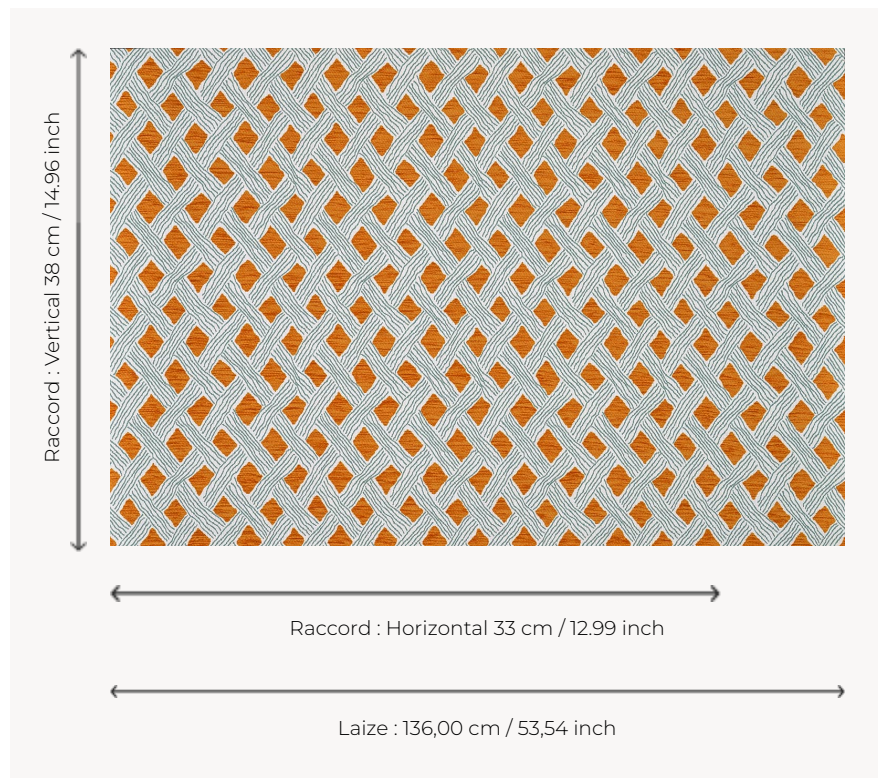



# L4011001 BEHANZIN OUTDOOR

Jacquard reproducing the pattern of a Kuba velvet from the Democratic Republic of Congo, so called because of the use of looped raffia threads, a distant reminiscence of the loops found in Italian velvets. This iconic Maison Le Manach design has been reimaged in a new high-performance outdoor weave by the Pierre Frey workshops in northern France, certified with the EPV label and renowned across Europe for their expertise in stain-resistant and lightfast textiles.

## L4011001 - VÉGÉTAL



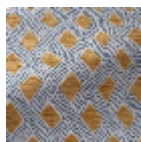
## Le manach

<b>PERFORMANCE</b>	Outdoor
<b>TYPE</b>	Chenille - Fibres douces - Jacquards - Soft fiber fabrics
<b>USE</b>	Moderate use
<b>MARTINDALE</b>	< 20.000 T
<b>COMPOSITION</b>	98 % Acrylic - 2 % Polyamide
<b>SALES UNIT</b>	Available per meter/yard
<b>WIDTH</b>	136 cm / 53,54 inch
<b>REPEAT</b>	H: 33 cm - 12,99 inch V: 38 cm - 14,96 inch Straight repeat
<b>WEIGHT</b>	884 gr / ml
<b>CARE</b>	
<b>CERTIFICATIONS</b>	BS5852 Cigarette test NFPA 260-Class 1 CAL TB 117- Pass
<b>NOTES</b>	High lightfastness, mold-resistant, stain & water repellent Washable fabric Made in France (EPV Living Heritage Mill) Indoor-Outdoor fabric Woven in Pierre Frey's workshop in northern France. Living Heritage Mill.
<b>INFORMATION</b>	Reinforced stitching recommended to avoid fraying at seams For outdoor use, make sure to use appropriate lining materials. Remember to store pads and cushions in a clean, dry place when not in use.
<b>BOOK</b>	L9979202501

## 2 Colors



L4011001  
VÉGÉTAL



L4011002  
ESTIVAL