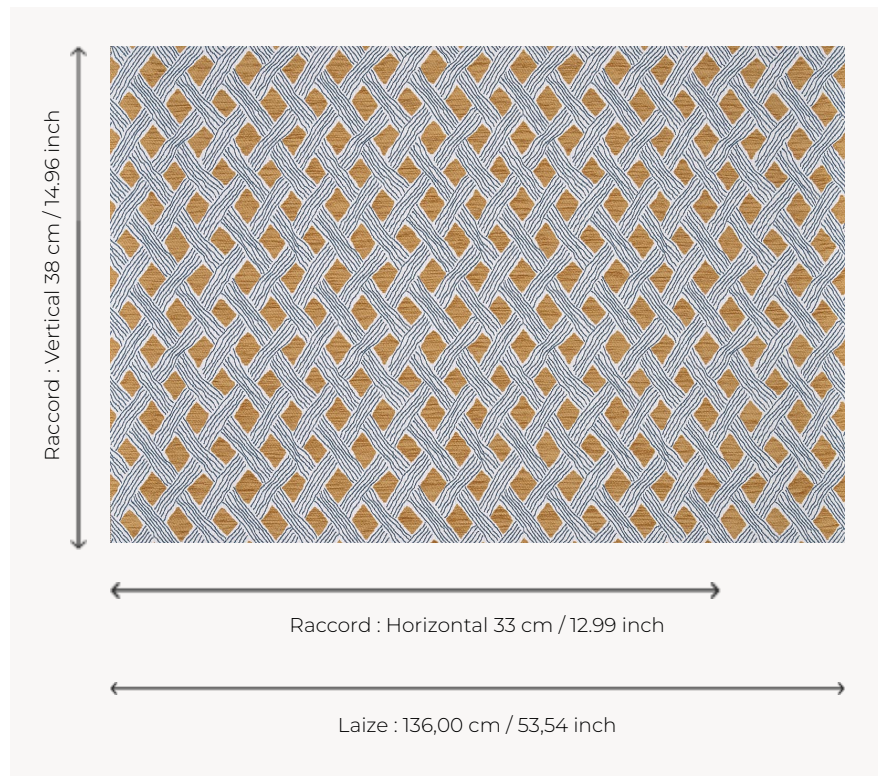


# L4011002 BEHANZIN OUTDOOR

Jacquard reproducing the pattern of a Kuba velvet from the Democratic Republic of Congo, so called because of the use of looped raffia threads, a distant reminiscence of the loops found in Italian velvets. This iconic Maison Le Manach design has been reimaged in a new high-performance outdoor weave by the Pierre Frey workshops in northern France, certified with the EPV label and renowned across Europe for their expertise in stain-resistant and lightfast textiles.

## L4011002 - ESTIVAL



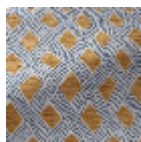
## Le manach

<b>PERFORMANCE</b>	Outdoor
<b>TYPE</b>	-
<b>USE</b>	Moderate use
<b>MARTINDALE</b>	< 20.000 T
<b>COMPOSITION</b>	98 % Acrylic - 2 % Polyamide
<b>SALES UNIT</b>	Available per meter/yard
<b>WIDTH</b>	136 cm / 53,54 inch
<b>REPEAT</b>	H: 33 cm - 12,99 inch V: 38 cm - 14,96 inch Straight repeat
<b>WEIGHT</b>	884 gr / ml
<b>CARE</b>	
<b>CERTIFICATIONS</b>	NFPA 260-Class 1 CAL TB 117- Pass
<b>NOTES</b>	<p>High lightfastness, mold-resistant, stain &amp; water repellent</p> <p>Washable fabric</p> <p>Made in France (EPV Living Heritage Mill)</p> <p>Indoor-Outdoor fabric</p> <p>Woven in Pierre Frey's workshop in northern France. Living Heritage Mill.</p>
<b>INFORMATION</b>	<p>Reinforced stitching recommended to avoid fraying at seams</p> <p>For outdoor use, make sure to use appropriate lining materials.</p> <p>Remember to store pads and cushions in a clean, dry place when not in use.</p>
<b>BOOK</b>	L9979202501

## 2 Colors



L4011001  
VÉGÉTAL



L4011002  
ESTIVAL