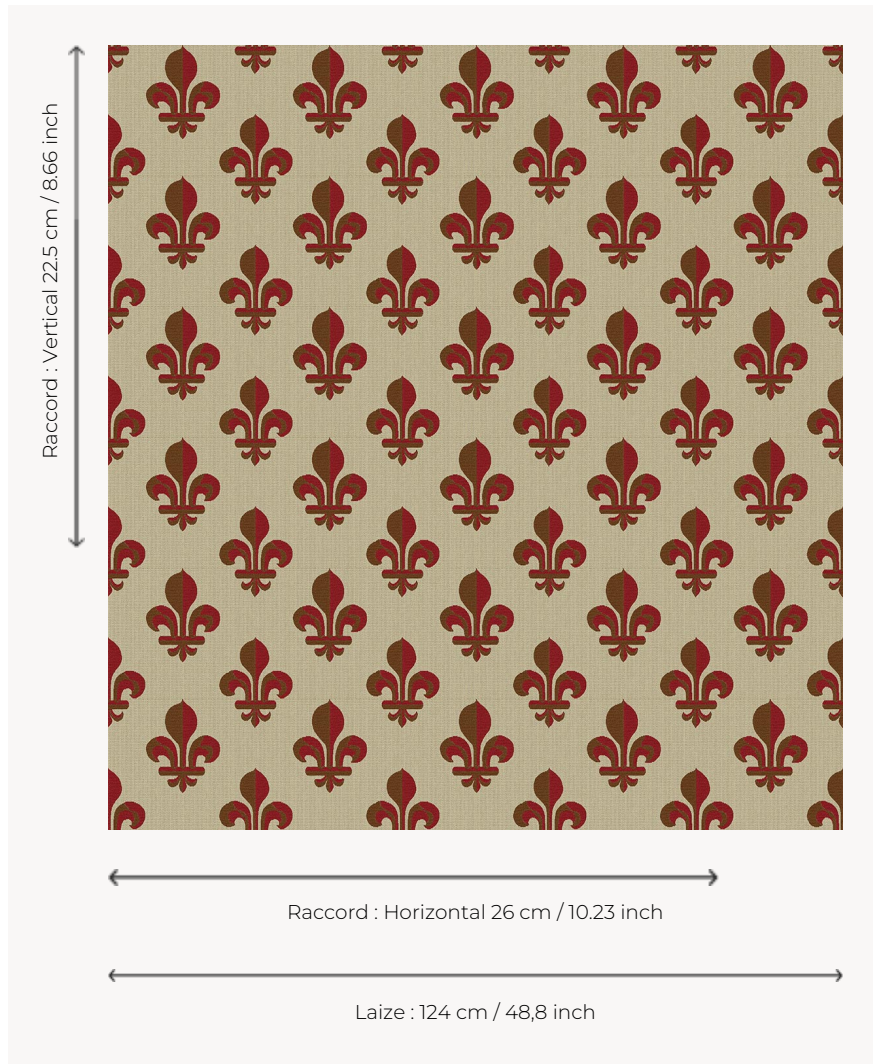


# L4168\_FLEUR\_DE\_LYS\_B31\_B65\_FE FLEUR DE LYS

Symbol of royal authority, its use is documented as far back as the Carolingian period. It was Louis VII who made it the coat of arms of France in the 12th century. Abandoned at the time of the French Revolution, the fleur-de-lys was reintroduced during the Restoration with the return of the Bourbons to power.

## L4168\_FLEUR\_DE\_LYS\_B31\_B65\_FE -



## Le manach

<b>TYPE</b>	Toiles de Tours
<b>DESIGN STRUCTURE</b>	2 Colors, 1 Ground
<b>RECOMMENDED YARNS</b>	Nacré Chenille Bouclette
<b>SPLIT YARNS</b>	Yes
<b>SALES UNIT</b>	Available per meter
<b>WIDTH</b>	124 cm env. / approx 48,80 inch
<b>REPEAT</b>	H: 26 cm env. - approx 10,23 inch V: 22 cm env. - approx 8,66 inch Straight repeat
<b>CARE</b>	
<b>NOTES</b>	Woven in Pierre Frey's workshop in northern France. Living Heritage Mill.

3 Colors



L4168\_FLEUR\_ DE\_LYS\_B31\_B 65\_FE



L4168\_FLEUR\_ DE\_LYS\_B38\_ N3019\_FE



L4168\_FLEUR\_ DE\_LYS\_N3011 \_N3019\_FI