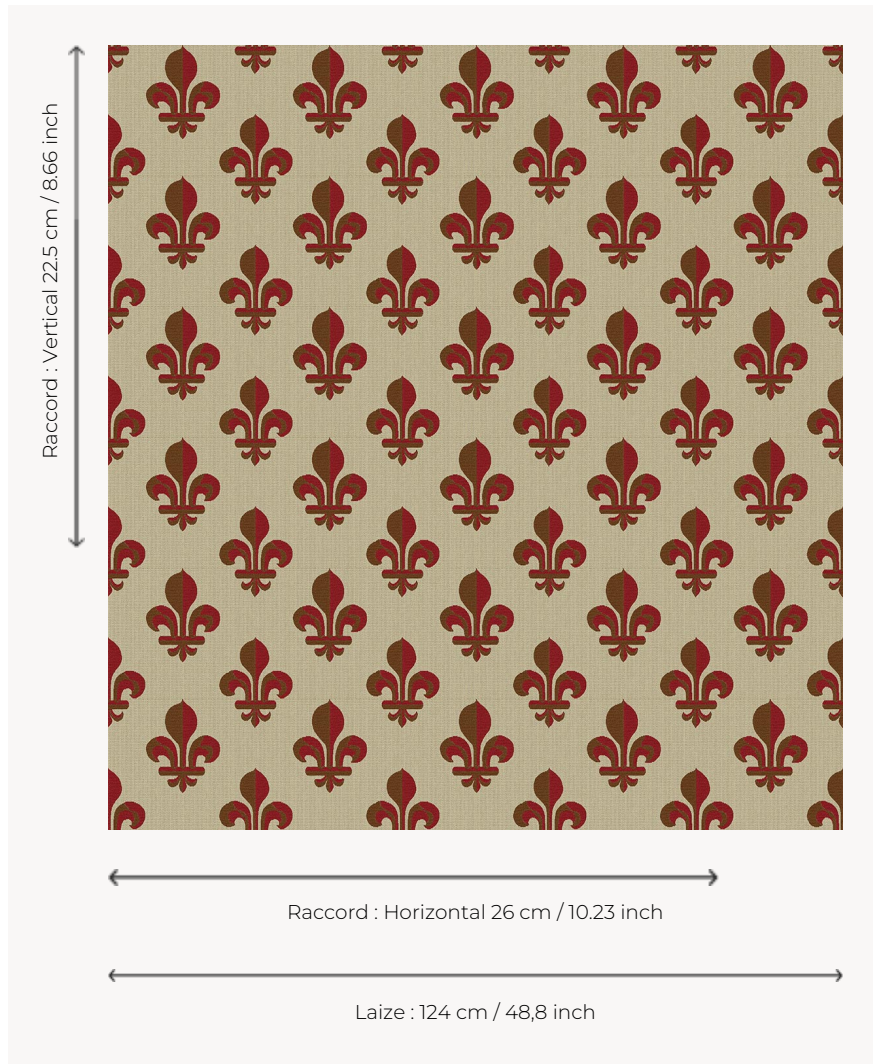


L4168_FLEUR_DE_LYS_N3011_N3019_FI FLEUR DE LYS

Symbol of royal authority, its use is documented as far back as the Carolingian period. It was Louis VII who made it the coat of arms of France in the 12th century. Abandoned at the time of the French Revolution, the fleur-de-lys was reintroduced during the Restoration with the return of the Bourbons to power.

L4168_FLEUR_DE_LYS_N3011_N3019_FI -



Le manach

TYPE	Toiles de Tours
DESIGN STRUCTURE	2 Colors, 1 Ground
RECOMMENDED YARNS	Nacré Chenille Bouclette
SPLIT YARNS	Yes
SALES UNIT	Available per meter
WIDTH	124 cm env. / approx 48,80 inch
REPEAT	H: 26 cm env. - approx 10,23 inch V: 22 cm env. - approx 8,66 inch Straight repeat
CARE	
NOTES	Woven in Pierre Frey's workshop in northern France. Living Heritage Mill.

3 Colors



L4168_FLEUR_ DE_LYS_B31_B 65_FE



L4168_FLEUR_ DE_LYS_B38_ N3019_FE



L4168_FLEUR_ DE_LYS_N3011 _N3019_FI