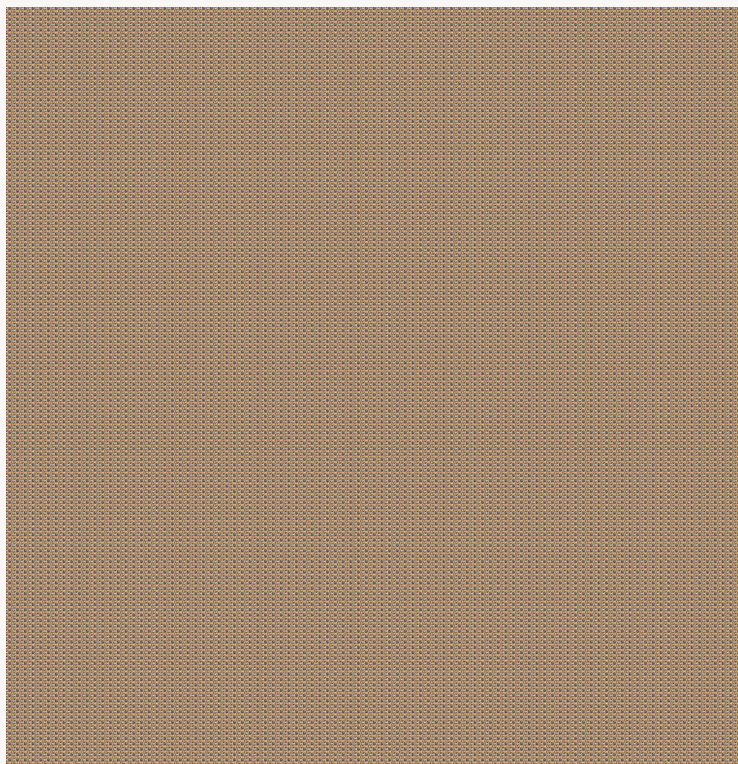


# L4432\_PIED\_DE\_COQ\_N3012\_N3016 PIED DE COQ

This emblematic pattern of 1950s fashion is here proposed in a upholstery version.

## L4432\_PIED\_DE\_COQ\_N3012\_N3016 -



Laize : 124 cm / 48,8 inch

## Le manach

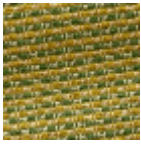
<b>TYPE</b>	Toiles de Tours
<b>DESIGN STRUCTURE</b>	2 Colors
<b>RECOMMENDED YARNS</b>	Nacré Chenille Bouclette
<b>SPLIT YARNS</b>	Yes
<b>SALES UNIT</b>	Available per meter
<b>WIDTH</b>	124 cm env. / approx 48,80 inch
<b>CARE</b>	

**NOTES** Woven in Pierre Frey's workshop in northern France. Living Heritage Mill. Requires reinforced stitching and appropriate tailoring margins

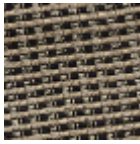
# 8 Colors



L4432\_PIED\_D  
E\_COQ\_B14\_N  
3013



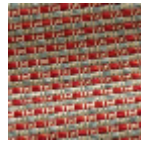
L4432\_PIED\_D  
E\_COQ\_B76\_B  
23



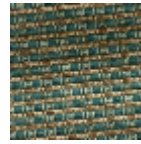
L4432\_PIED\_D  
E\_COQ\_C508\_  
C505



L4432\_PIED\_D  
E\_COQ\_N3012\_  
N3016



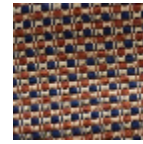
L4432\_PIED\_D  
E\_COQ\_N3133\_  
N3103



L4432\_PIED\_D  
E\_COQ\_N3152\_  
C535



L4432\_PIED\_D  
E\_COQ\_N3158\_  
N3125



L4432\_PIED\_D  
E\_COQ\_N3180\_  
\_N3011