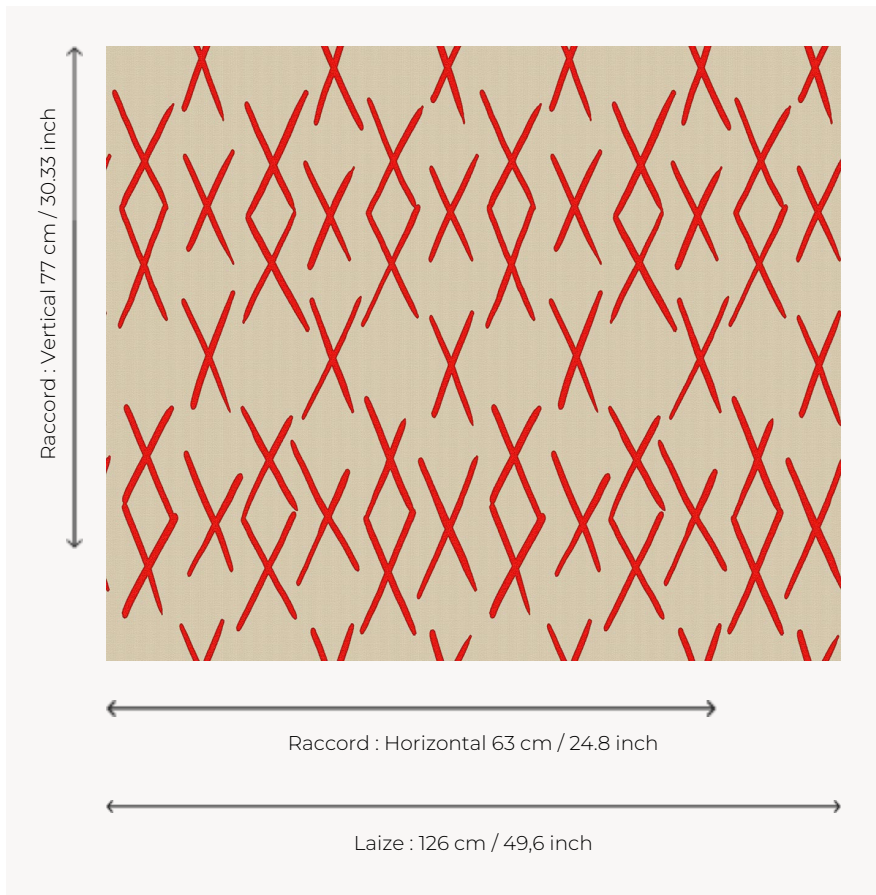


L4517_ZULU_B54_FE ZULU

Bicolor pattern of African influence in the line of the first Toiles de Tours published by Le Manach in 1928.

L4517_ZULU_B54_FE -



Le manach

TYPE	Toiles de Tours
DESIGN STRUCTURE	1 Color, 1 Ground
RECOMMENDED YARNS	Nacré Chenille Bouclette
SPLIT YARNS	Yes
REVERSIBLE	Yes
SALES UNIT	Available per meter
WIDTH	126 cm env. / approx 49,60 inch
REPEAT	H: 63 cm env. - approx 24,80 inch V: 77 cm env. - approx 30,33 inch Straight repeat
CARE	
NOTES	Woven in Pierre Frey's workshop in northern France. Living Heritage Mill.

4 Colors



L4517_ZULU_B
54_FE



L4517_ZULU_B
54_FE_VERSO



L4517_ZULU_C
538_FE



L4517_ZULU_C
538_FE_Verso