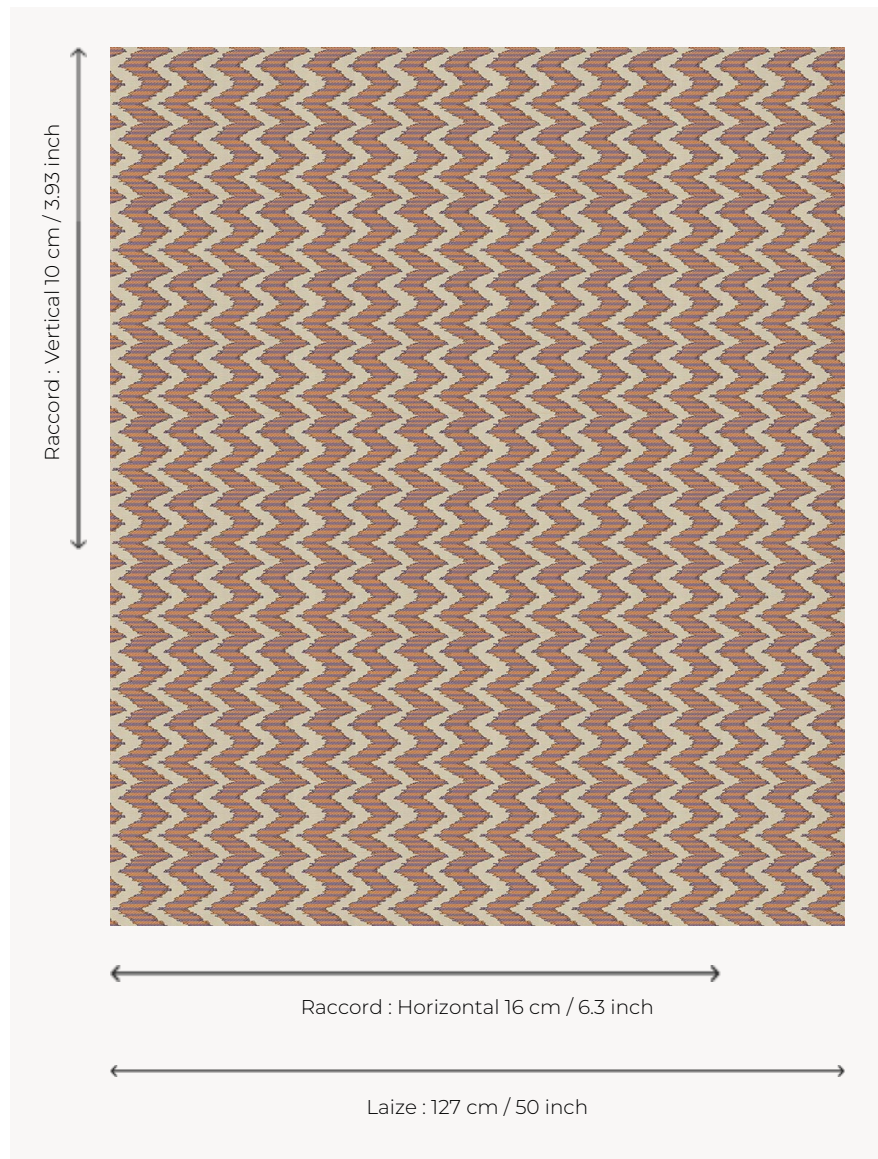


# L5001\_SULLY\_N3135\_N3149\_FE SULLY

Vertical herringbone as a rework of the Hungary point or the ikat.

L5001\_SULLY\_N3135\_N3149\_FE -



## Le manach

<b>TYPE</b>	Toiles de Tours
<b>DESIGN STRUCTURE</b>	2 Colors, 1 Ground
<b>RECOMMENDED YARNS</b>	Nacré Chenille Bouclette
<b>SPLIT YARNS</b>	Yes
<b>SALES UNIT</b>	Available per meter
<b>WIDTH</b>	127 cm env. / approx 50,00 inch
<b>REPEAT</b>	H: 16 cm env. - approx 6,30 inch V: 10 cm env. - approx 3,93 inch Straight repeat
<b>CARE</b>	
<b>NOTES</b>	Woven in Pierre Frey's workshop in northern France. Living Heritage Mill.

## 4 Colors



L5001\_SULLY\_  
B21\_B53\_FG



L5001\_SULLY\_  
C512\_C511\_FM



L5001\_SULLY\_  
N3135\_N3149\_F  
E



L5001\_SULLY\_  
N3139\_N3004\_  
FE