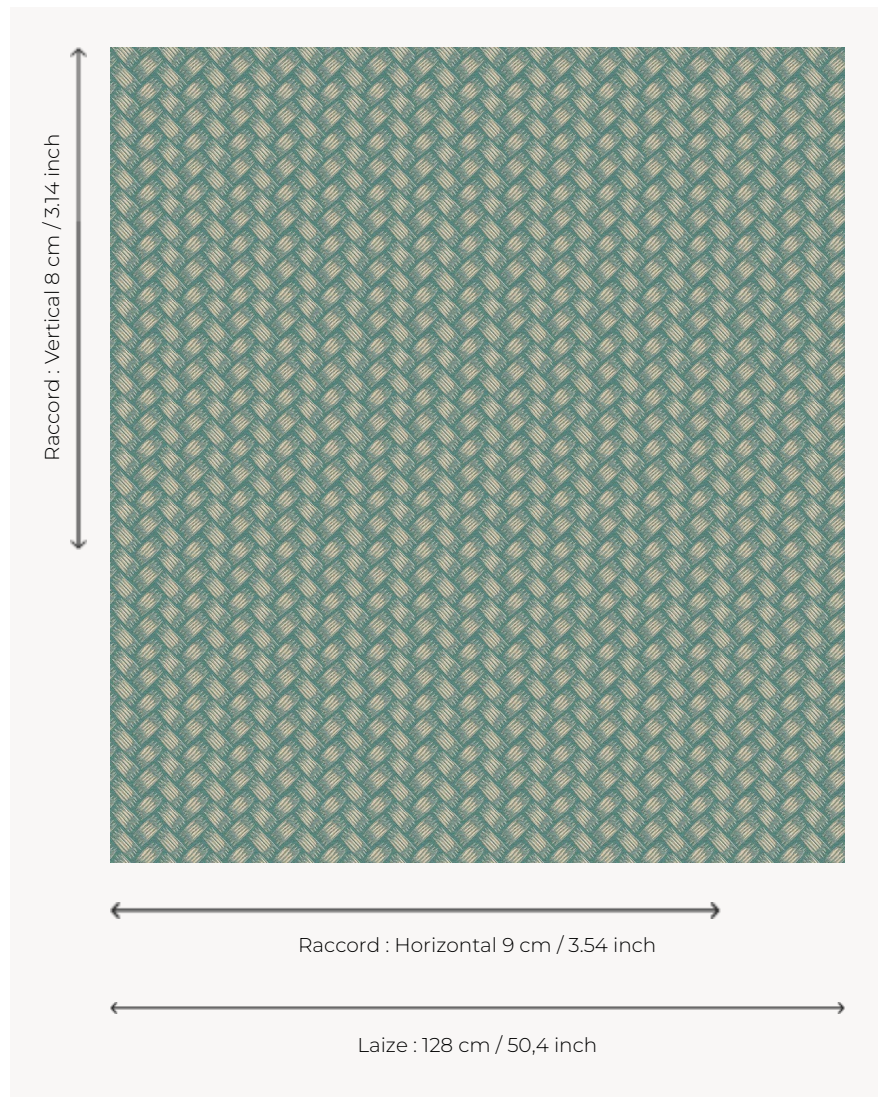


# L5003\_TRESSAGE\_C508\_N3144\_FM TRESSAGE

Reproduction of a late 18th century toile de Jouy evoking the braiding of rushes or straw.

## L5003\_TRESSAGE\_C508\_N3144\_FM -



## Le manach

<b>TYPE</b>	Toiles de Tours
<b>DESIGN STRUCTURE</b>	2 Colors, 1 Ground
<b>RECOMMENDED YARNS</b>	Nacré Chenille Bouclette
<b>SPLIT YARNS</b>	Yes
<b>SALES UNIT</b>	Available per meter
<b>WIDTH</b>	128 cm env. / approx 50,40 inch
<b>REPEAT</b>	H: 9 cm env. - approx 3,54 inch V: 8 cm env. - approx 3,14 inch Straight repeat

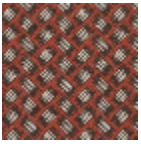
### CARE



### NOTES

Woven in Pierre Frey's workshop in northern France. Living Heritage Mill.

# 5 Colors



L5003\_TRESSA  
GE\_B92\_B84\_  
B54\_B68\_FE



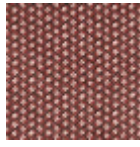
L5003\_TRESSA  
GE\_C508\_N314  
4\_FM



L5003\_TRESSA  
GE\_C509\_C517  
\_FM



L5003\_TRESSA  
GE\_C515\_N300  
4\_FE



L5003\_TRESSA  
GE\_N3002\_N31  
76\_FE