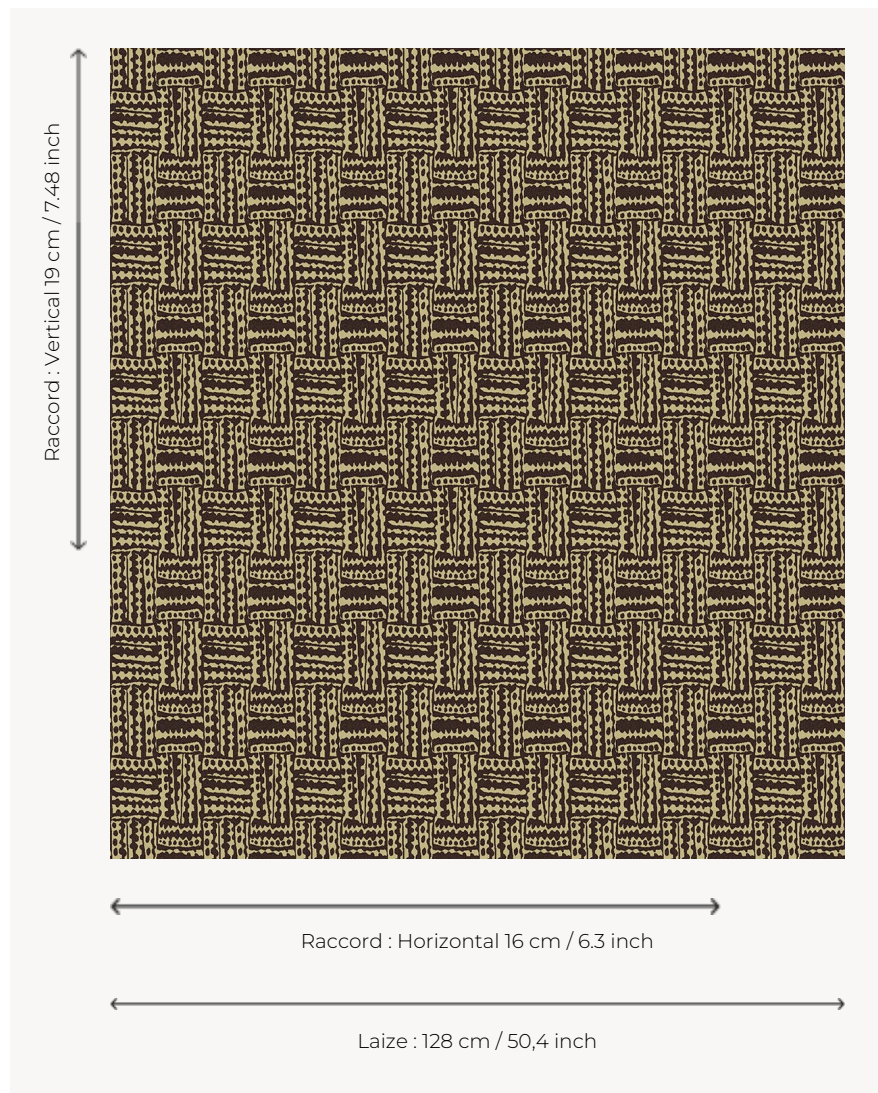


## L5004\_CONGO\_C507\_C512\_FM CONGO

CONGO perfectly reflects the spirit of the first African Toiles de Tours published by Le Manach in 1928 while giving it a contemporary twist.

### L5004\_CONGO\_C507\_C512\_FM -



### Le manach

<b>TYPE</b>	Toiles de Tours
<b>DESIGN STRUCTURE</b>	1 Color, 1 Ground
<b>RECOMMENDED YARNS</b>	Nacré Chenille Bouclette
<b>SPLIT YARNS</b>	Yes
<b>SALES UNIT</b>	Available per meter
<b>WIDTH</b>	128 cm env. / approx 50,40 inch
<b>REPEAT</b>	H: 16 cm env. - approx 6,30 inch V: 19 cm env. - approx 7,48 inch Straight repeat
<b>CARE</b>	
<b>NOTES</b>	Woven in Pierre Frey's workshop in northern France. Living Heritage Mill.

### 3 Colors



L5004\_CONG  
O\_B30\_FE



L5004\_CONG  
O\_C507\_C512\_  
FM



L5004\_CONG  
O\_N3010\_FE