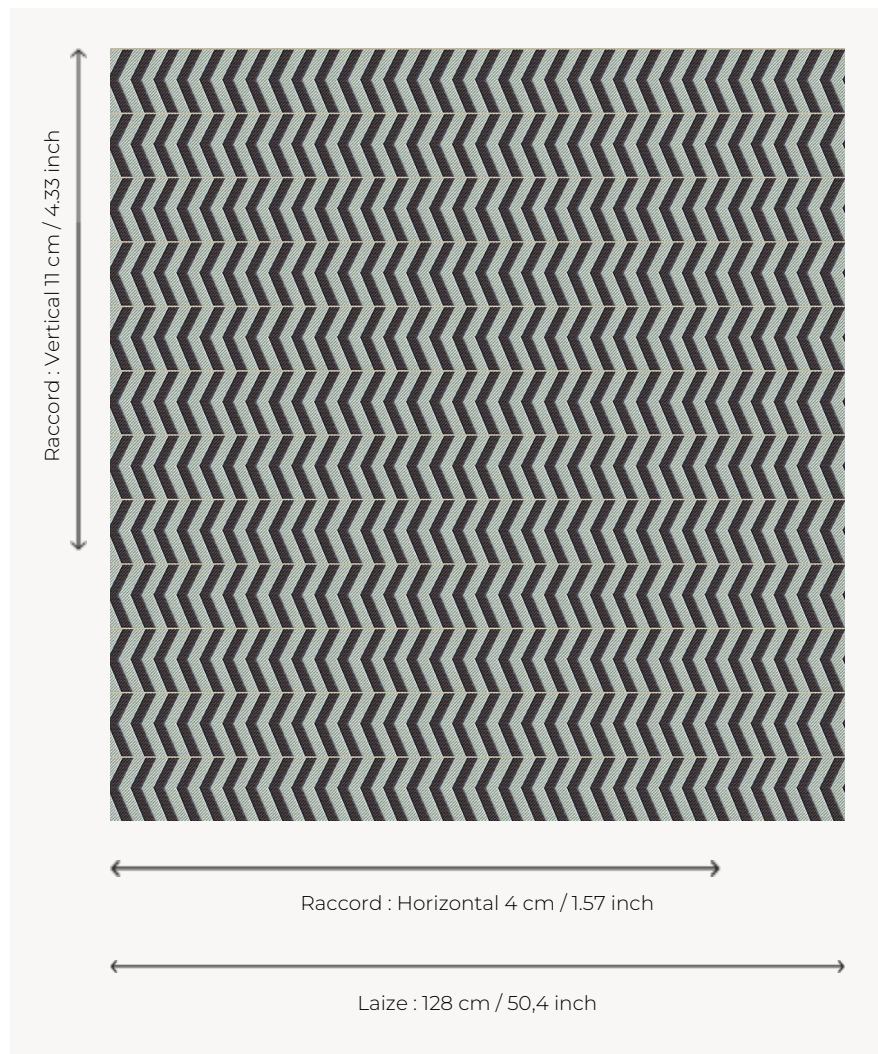


L5006_BOMA_N3024_N3022_FE BOMA

Vertical herringbone crossed by a thin border to bring a contemporary twist to this very graphic pattern.

L5006_BOMA_N3024_N3022_FE -



Le manach

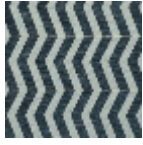
TYPE	Toiles de Tours
DESIGN STRUCTURE	2 Colors, 1 Ground
RECOMMENDED YARNS	Nacré Chenille Bouclette
SPLIT YARNS	Yes
SALES UNIT	Available per meter
WIDTH	128 cm env. / approx 50,40 inch
REPEAT	H: 4 cm env. - approx 1,57 inch V: 11 cm env. - approx 4,33 inch Straight repeat
CARE	

NOTES Woven in Pierre Frey's workshop in northern France. Living Heritage Mill.

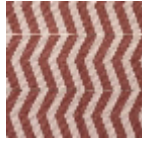
3 Colors



L5006_BOMA_
B23_B91_FE



L5006_BOMA_
C534_B30_FE



L5006_BOMA_
N3024_N3022_
FE