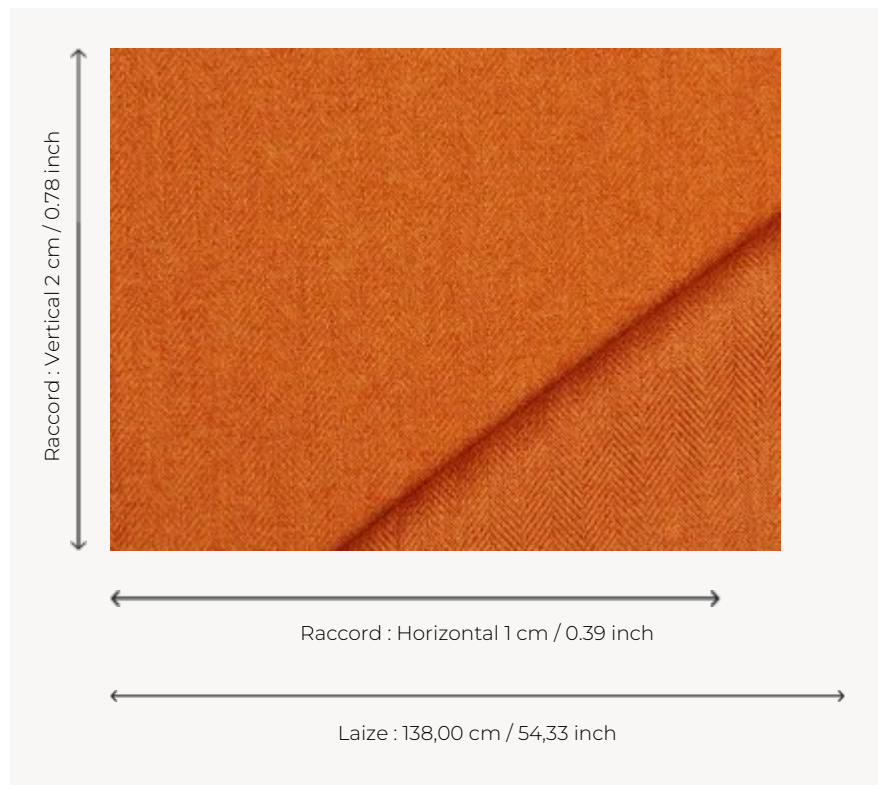


# 07939011 SHERLOCK

A captivating reversible cloth influenced by men's suiting, this plain fabric is available in a variety of colors that range from classic to contemporary.

## 07939011 - Cource



## Boussac

<b>PERFORMANCE</b>	Martindale > 25 000 T
<b>TYPE</b>	Fibres douces - Plains
<b>USE</b>	Intensive use
<b>MARTINDALE</b>	60.000 T
<b>COMPOSITION</b>	100 % Polyester
<b>SALES UNIT</b>	Available per meter/yard
<b>WIDTH</b>	138 cm / 54,33 inch
<b>REPEAT</b>	H: 1 cm - 0,39 inch V: 2 cm - 0,78 inch
<b>WEIGHT</b>	360 gr / ml
<b>CARE</b>	

<b>CERTIFICATIONS</b>	BS5852 Cigarette test EN1021-1-2 in conjunction with suitable combustion modified foam NFPA 260-Class 1 CRIB 5 in conjunction with suitable combustion modified foam
-----------------------	---

<b>NOTES</b>	Reversible Can be embossed
--------------	-------------------------------

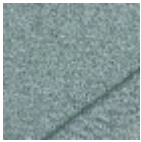
# 14 Colors



O7939001  
Grand large



O7939002  
Usine



O7939003  
Mistral



O7939004  
Sel



O7939005  
Levure



O7939006  
Ficelle



O7939007  
Jute



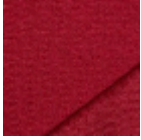
O7939008  
Acacia



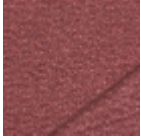
O7939010  
Mangue



O7939011  
Courge



O7939012  
Matador



O7939014  
Tomette



O7939019  
Alpaga



O7939023  
Tableau