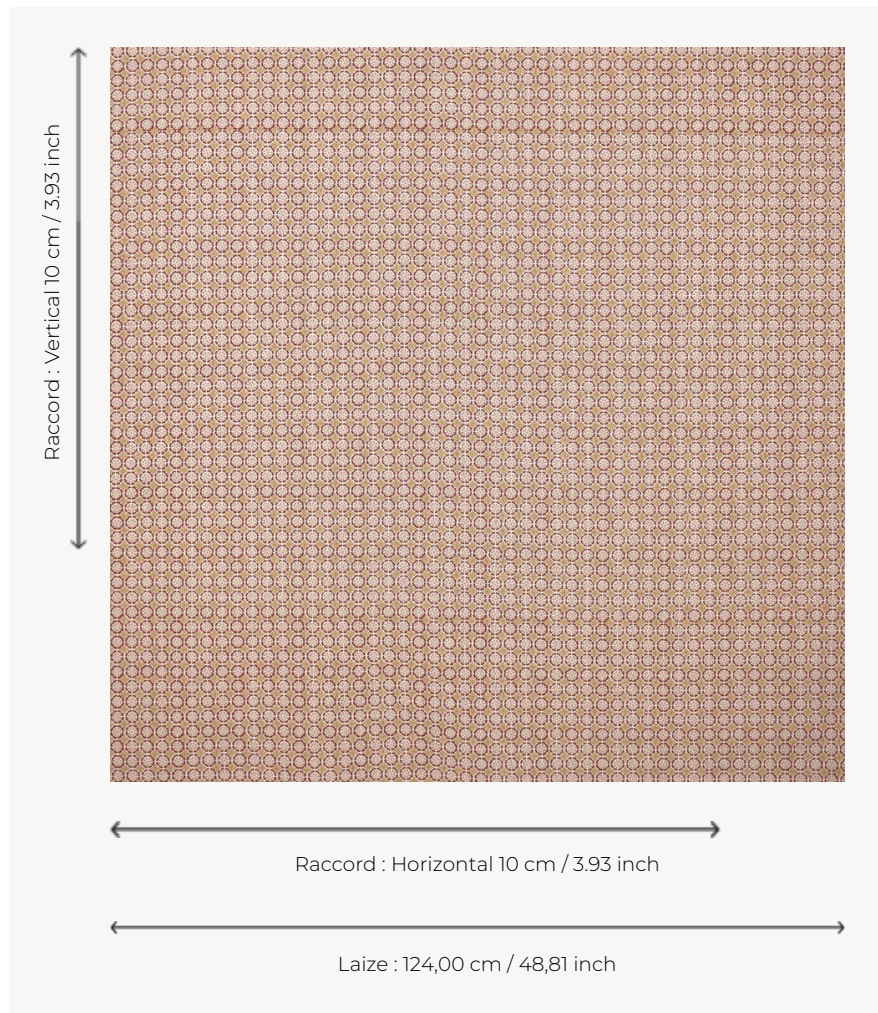


T0011003 DAISY DAISY

DAISY DAISY features a sowing of small stylized flowers in a revisited Liberty spirit.

T0011003 - Pompeii



Thorp of London

TYPE	Prints
TECHNIQUE	Screen printed by hand
SALES UNIT	Available per meter/yard
GROUND	TS015 - Margaret Off White
COMPOSITION	60 % Cotton - 40 % Hemp
NUMBER OF COLORS	3
COLORS	A-POMPEII 163 B-SQUASH 97 C-SHELL 218
DESIGN WIDTH	124 cm / 48,81 inch
REPEAT	H: 10 cm - 3,93 inch V: 10 cm - 3,93 inch Straight repeat
WEIGHT	455 gr / ml
CARE	
INFORMATION	Hand screen printed

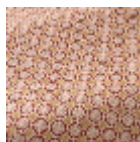
3 Colors



T0011001
Fig



T0011002
Duck



T0011003
Pompeii