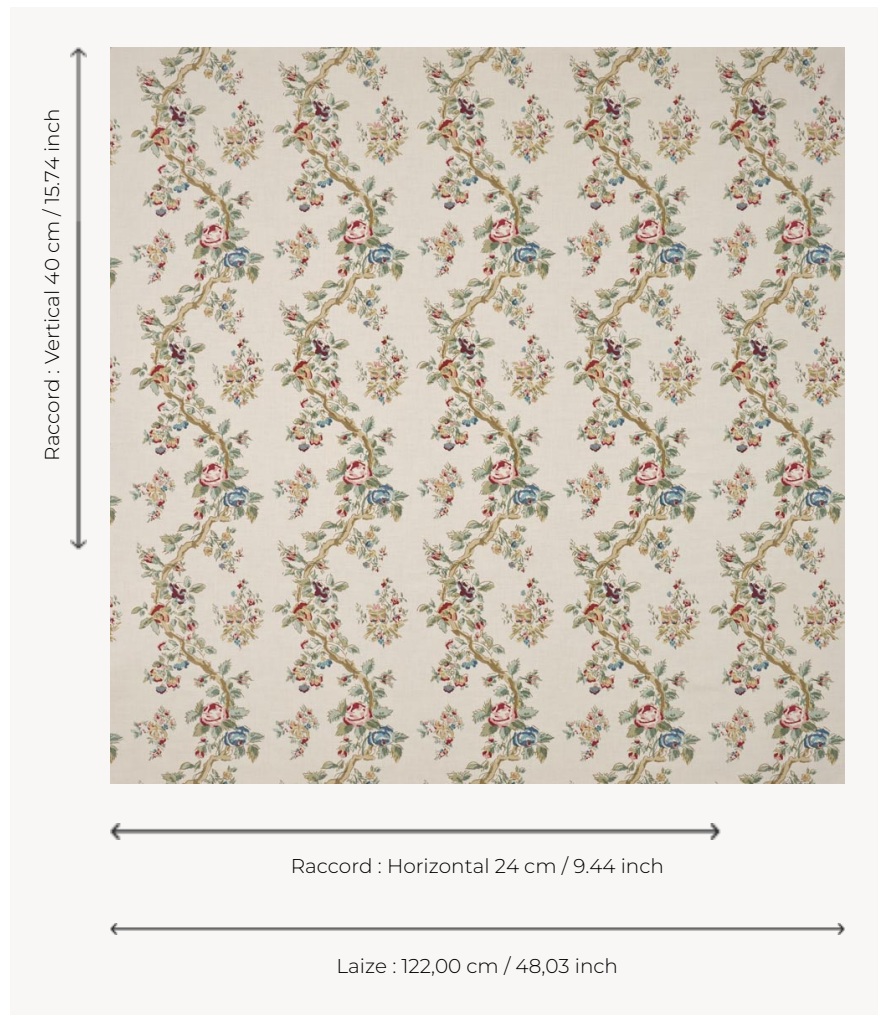


T0069002 GERMAINE

This undulating, flowering branch reproduces the charm of traditional woodblock prints.

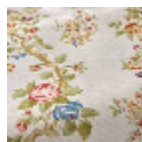
T0069002 - Medici



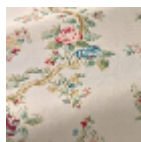
Thorp of London

TYPE	Prints
TECHNIQUE	Screen printed by hand
SALES UNIT	-
GROUND	TS017 - Mary Natural
COMPOSITION	100 % Cotton
NUMBER OF COLORS	9
COLORS	A-SAND 216 B-PACIFIC 54 C-BERLINGOT 21 D-MEDICI 53 E-PEACOCK 126 F-RASPBERRY 38 G-LICHEN 114 H-CHAMOIS 64 I-HAZELNUT 165
DESIGN WIDTH	122 cm / 48,03 inch
REPEAT	H: 24 cm - 9,44 inch V: 40 cm - 15,74 inch
WEIGHT	175 gr / ml
CARE	
INFORMATION	Hand screen printed

3 Colors



T0069001
Matcha



T0069002
Medici

T0069003
STRAWBERRY