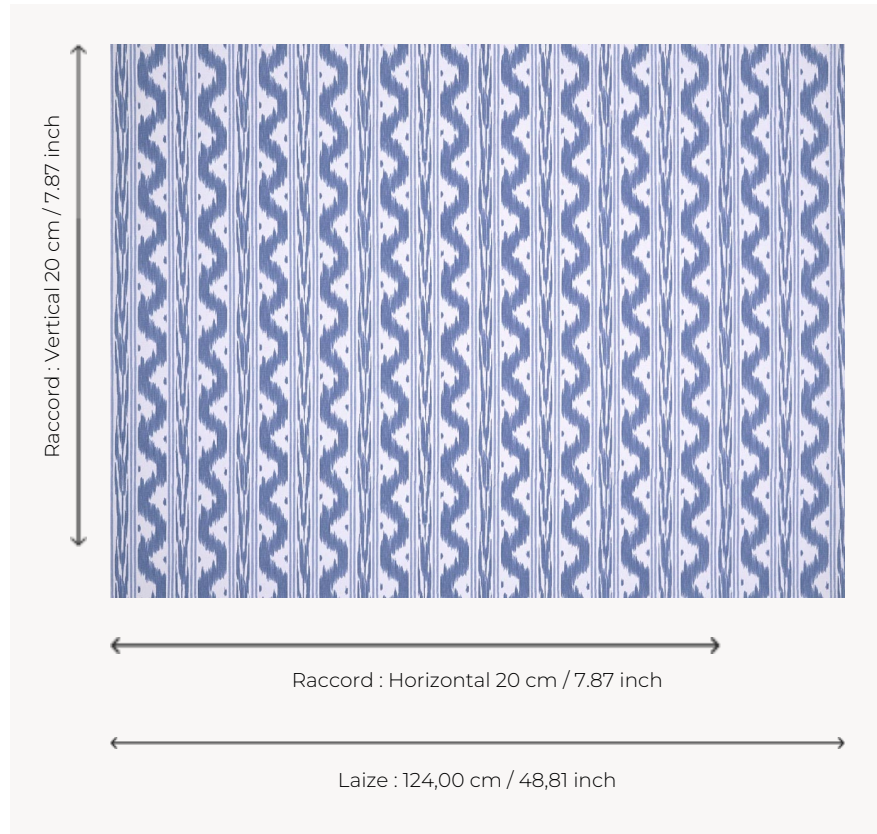


T0084002 PALMA SMALL THORP

This pattern reproduces the flamed or ikat fabrics traditionally produced in France. Most of these fabrics were used for bed linings or for lining the outer slopes, also known as lambrequins.

T0084002 - Atlantic



Thorp of London

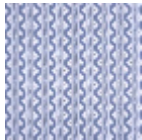
TYPE	Prints
TECHNIQUE	Screen printed by hand
USE	Normal use
MARTINDALE	35.000 T
SALES UNIT	Available per meter/yard
GROUND	TS002 - Bradley White
COMPOSITION	100 % Cotton
NUMBER OF COLORS	2
COLORS	A-ATLANTIC 186 B-DELFT 394
DESIGN WIDTH	124 cm / 48,81 inch
REPEAT	H: 20 cm - 7,87 inch V: 20 cm - 7,87 inch Straight repeat
WEIGHT	361 gr / ml
CARE	

INFORMATION Hand screen printed

4 Colors



T0084001
Celadon



T0084002
Atlantic



T0084003
Cameo



T0084004
Foam