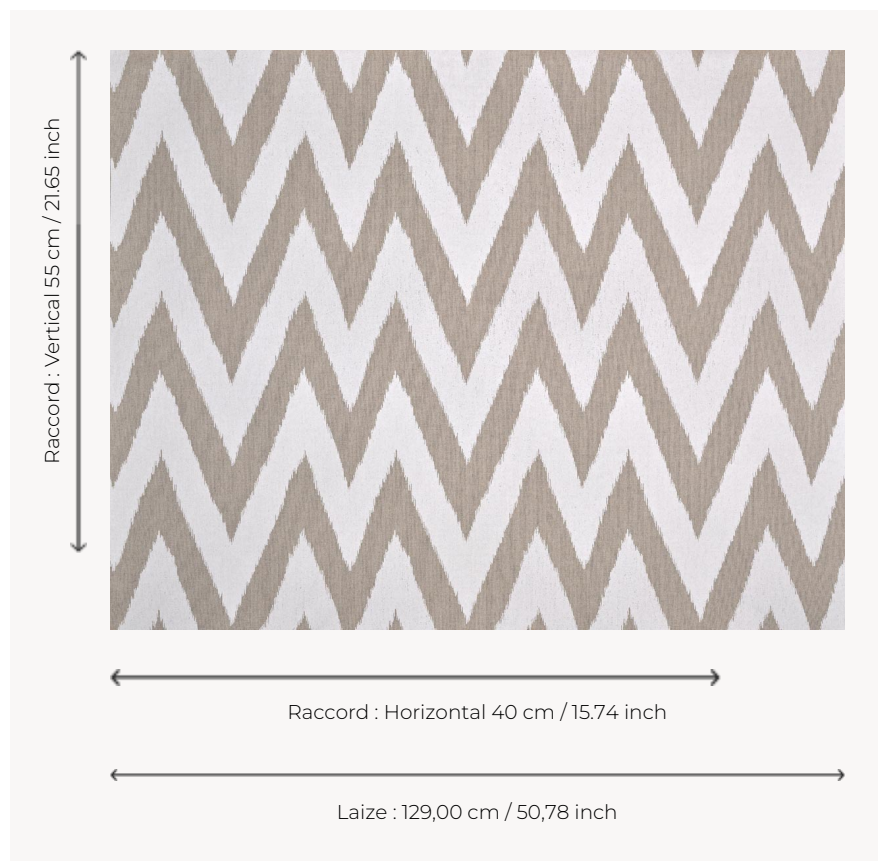


T0114003 TWIN PEAKS

This large and modern chevron revisits the Hungarian stitches of the 17th century.

T0114003 - White



Thorp of London

TYPE	Prints
TECHNIQUE	Screen printed by hand
SALES UNIT	-
GROUND	TS014 - Margaret Natural
COMPOSITION	60 % Cotton - 40 % Hemp
NUMBER OF COLORS	2
COLORS	A-WHITE 320 B-WHITE 320
DESIGN WIDTH	129 cm / 50,78 inch
REPEAT	H: 40 cm - 15,74 inch V: 55 cm - 21,65 inch
WEIGHT	455 gr / ml
CARE	
INFORMATION	Hand screen printed

5 Colors



T0114001
Petal



T0114002
Emerald



T0114003
White



T0114004
Artic

T0114005
CHESTNUT