

T0129001 PALME

PALME is inspired by the beautiful paisley pattern first adopted by English women in the second half of the 18th century.

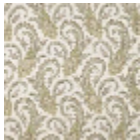
T0129001 - Laurel



Thorp of London

TYPE	Prints
TECHNIQUE	Screen printed by hand
SALES UNIT	-
GROUND	TS004 - Douglas White
COMPOSITION	78 % Linen - 22 % Bamboo viscose
NUMBER OF COLORS	6
COLORS	A-LAUREL 136 B-GREIGE 79 C-PISTACHIO 255 D-TAUPE 10 E-STRAW 5 F-CORN 185
DESIGN WIDTH	130 cm / 51,18 inch
REPEAT	H: 32 cm - 12,59 inch V: 53 cm - 20,86 inch
WEIGHT	436 gr / ml
CARE	
INFORMATION	Hand screen printed

4 Colors



T0129001
Laurel



T0129002
Dahlia



T0129003
Capri



T0129004
Wine