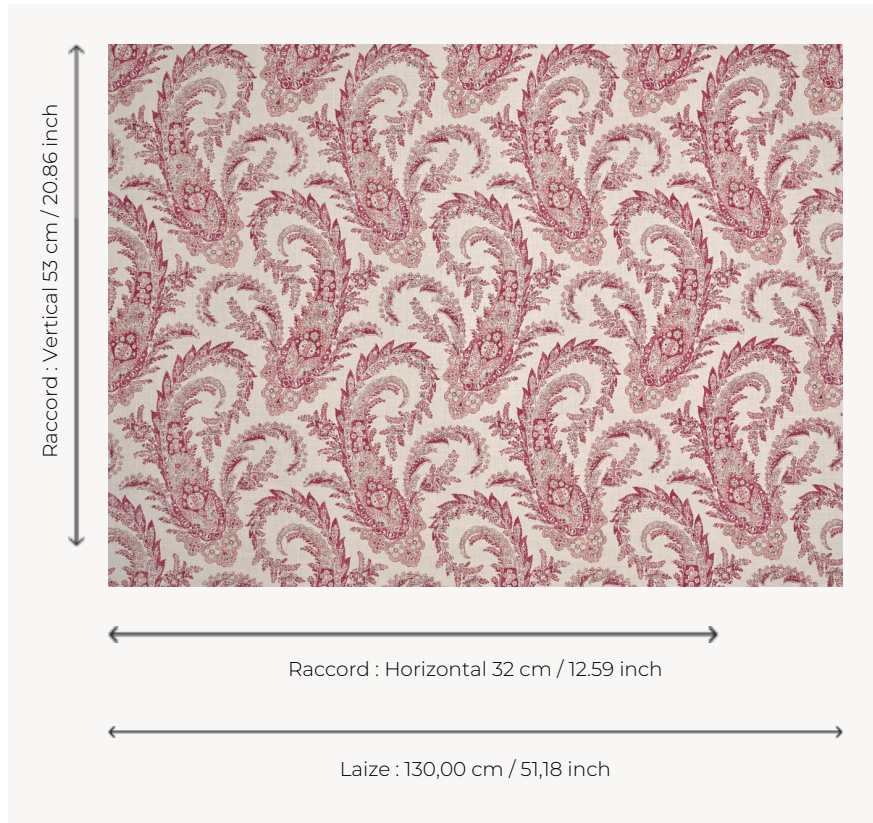


# T0129002 PALME

PALME is inspired by the beautiful paisley pattern first adopted by English women in the second half of the 18th century.

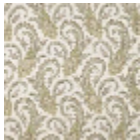
## T0129002 - Dahlia



## Thorp of London

TYPE	Prints
TECHNIQUE	Screen printed by hand
SALES UNIT	-
GROUND	TS007 - George Off White
COMPOSITION	100 % Linen
NUMBER OF COLORS	6
COLORS	A-CLARET 122 B-ALUMINIUM 134 C-FOAM 135 D-RASPBERRY 38 E-DAHLIA 182 F-POWDER 229
DESIGN WIDTH	130 cm / 51,18 inch
REPEAT	H: 32 cm - 12,59 inch V: 53 cm - 20,86 inch
WEIGHT	685 gr / ml
CARE	
INFORMATION	Hand screen printed

4 Colors



T0129001  
Laurel



T0129002  
Dahlia



T0129003  
Capri



T0129004  
Wine