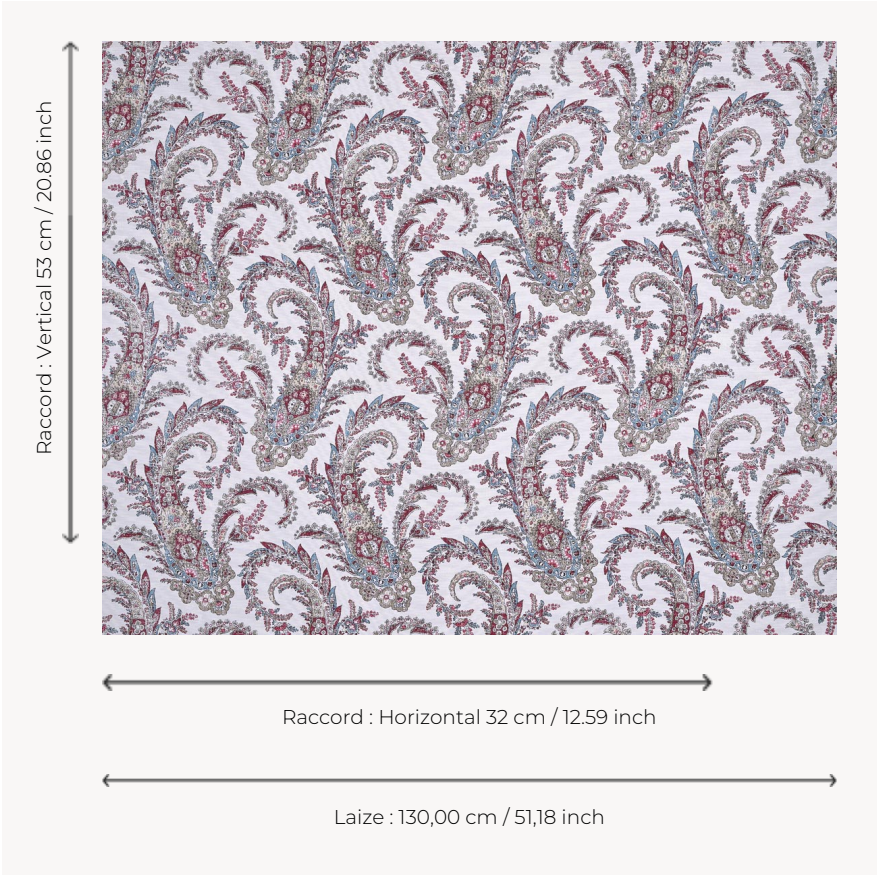


# T0129004 PALME

PALME is inspired by the beautiful paisley pattern first adopted by English women in the second half of the 18th century.

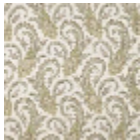
## T0129004 - Wine



## Thorp of London

TYPE	Prints
TECHNIQUE	Screen printed by hand
SALES UNIT	-
GROUND	TS016 - Marigold White
COMPOSITION	41 % Cotton - 27 % Linen - 18 % Bamboo viscose - 14 % Polyamide
NUMBER OF COLORS	6
COLORS	A-BLACK 190 B-DAHLIA 182 C-MARBLE 94 D-WINE 238 E-CAPRI 101 F-SMOKEY 309
DESIGN WIDTH	130 cm / 51,18 inch
REPEAT	H: 32 cm - 12,59 inch V: 53 cm - 20,86 inch
WEIGHT	377 gr / ml
CARE	
INFORMATION	Hand screen printed

4 Colors



T0129001  
Laurel



T0129002  
Dahlia



T0129003  
Capri



T0129004  
Wine