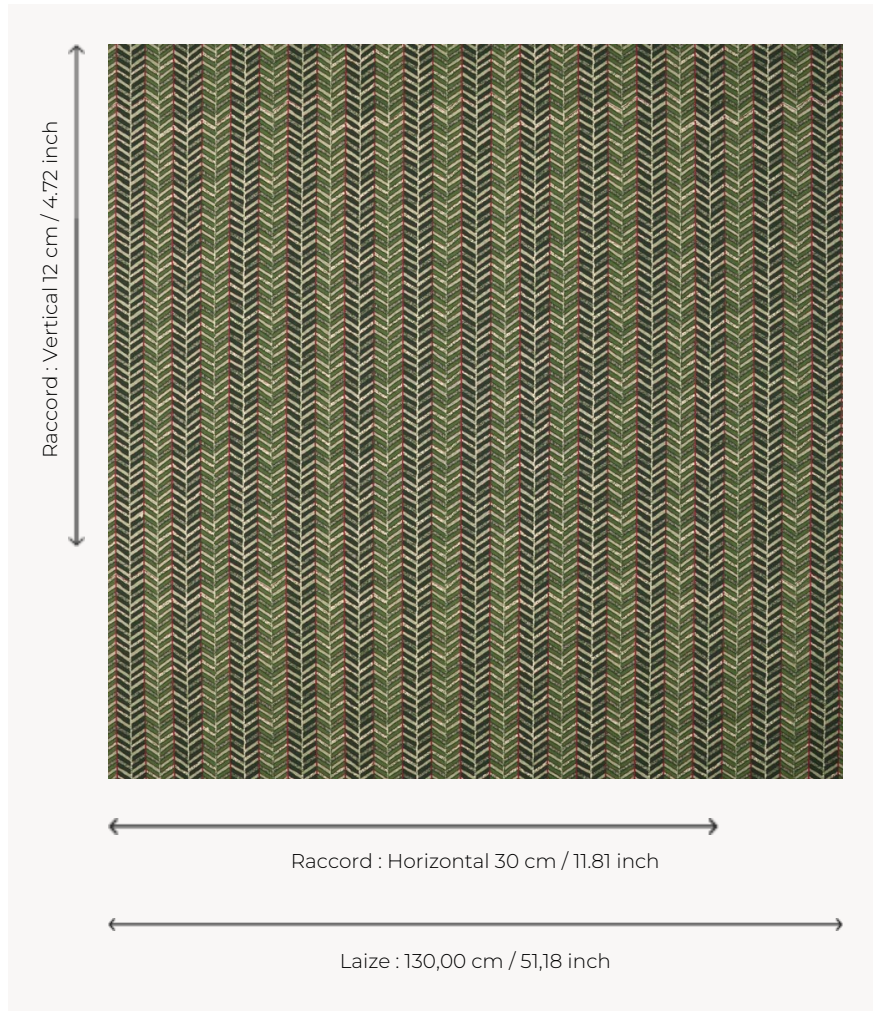


# T0132001 PALISADE

As if highlighted with felt-tip pen in places, the chevrons of this vertical stripe seem to be sketched by hand, creating a lovely rhythm.

## T0132001 - Pine



## Thorp of London

<b>TYPE</b>	Prints
<b>TECHNIQUE</b>	Screen printed by hand
<b>USE</b>	Normal use
<b>MARTINDALE</b>	35.000 T
<b>SALES UNIT</b>	-
<b>GROUND</b>	TS003 - Bradley Sand
<b>COMPOSITION</b>	100 % Cotton
<b>NUMBER OF COLORS</b>	3
<b>COLORS</b>	A-CRANBERRY 105 B-PINE 137 C-MOSS 2
<b>DESIGN WIDTH</b>	130 cm / 51,18 inch
<b>REPEAT</b>	H: 30 cm - 11,81 inch V: 12 cm - 4,72 inch
<b>WEIGHT</b>	361 gr / ml
<b>CARE</b>	
<b>INFORMATION</b>	Hand screen printed

1 Colors



T0132001  
Pine