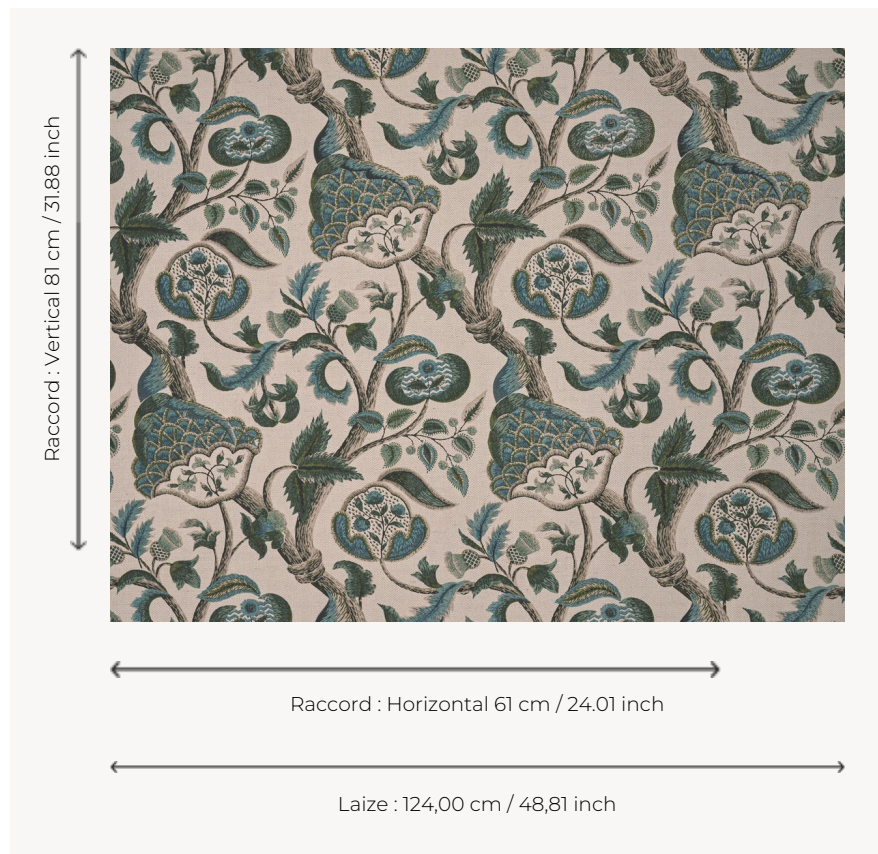


T0291001 EDINBURGH

This magnificent motif of sinuous flowering branches is a trompe-l'œil reproduction of the spectacular Crewel embroideries from the 17th English century.

T0291001 - Malachite

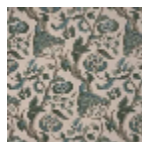


Thorp of London

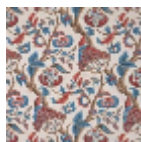
TYPE	Prints
TECHNIQUE	Screen printed by hand
SALES UNIT	-
GROUND	TS001 - Andrew Natural
COMPOSITION	60 % Cotton - 40 % Jute
NUMBER OF COLORS	10
COLORS	A-IVY 179 B-LAUREL 136 C-LICHEN 114 D-CAPRI 101 E-MALACHITE 177 F-MEDICI 53 G-SEVRES 206 H-DONKEY 294 I-CARIBBEAN 88 J-ROSEMARY 293
DESIGN WIDTH	124 cm / 48,81 inch
REPEAT	H: 61 cm - 24,01 inch V: 81 cm - 31,88 inch
WEIGHT	542 gr / ml
CARE	

INFORMATION Hand screen printed

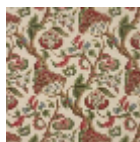
4 Colors



T0291001
Malachite



T0291002
Olympe



T0291003
Cranberry

T0291004
SEVRES