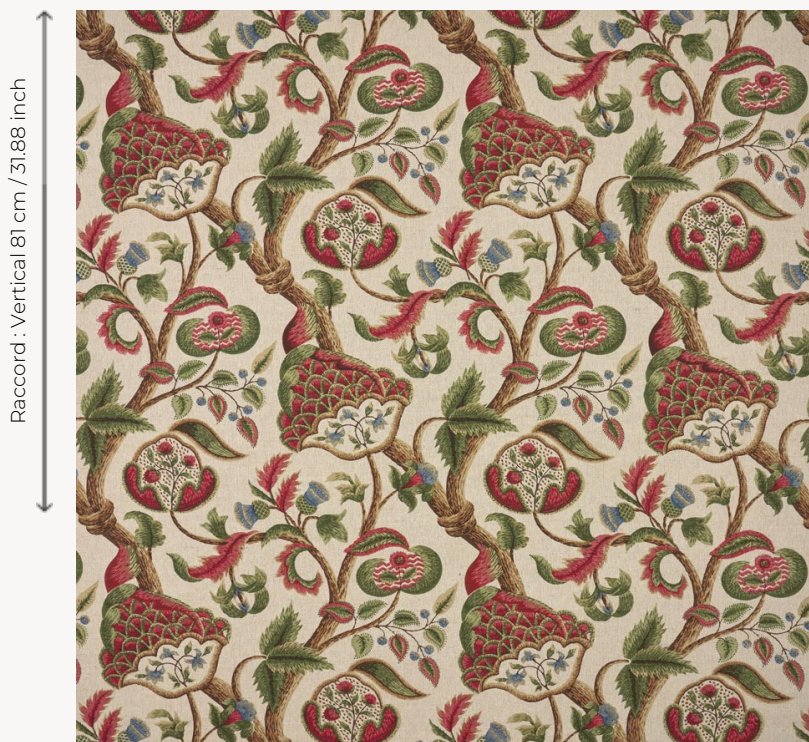


## T0291003 EDINBURGH

This magnificent motif of sinuous flowering branches is a trompe-l'œil reproduction of the spectacular Crewel embroideries from the 17th English century.

### T0291003 - Cranberry



Raccord : Horizontal 61 cm / 24.01 inch

Laize : 124,00 cm / 48,81 inch

### Thorp of London

<b>TYPE</b>	Prints
<b>TECHNIQUE</b>	Screen printed by hand
<b>SALES UNIT</b>	-
<b>GROUND</b>	TS021 - Winston Natural
<b>COMPOSITION</b>	55 % Cotton - 45 % Jute
<b>NUMBER OF COLORS</b>	10
<b>COLORS</b>	A-PEPPER 379 B-LAUREL 136 C-PEACOCK 126 D-CRANBERRY 105 E-ELM 109 F-MOSAIC 208 G-MATCHA 111 H-SAND 216 I-CALYPSO 57 J-SIENNA 209
<b>DESIGN WIDTH</b>	124 cm / 48,81 inch
<b>REPEAT</b>	H: 61 cm - 24,01 inch V: 81 cm - 31,88 inch
<b>WEIGHT</b>	449 gr / ml
<b>CARE</b>	
<b>INFORMATION</b>	Hand screen printed

## 4 Colors



T0291001  
Malachite



T0291002  
Olympe



T0291003  
Cranberry

T0291004  
SEVRES