

T0454001 SEGOLENE

This beautiful design reflects the spirit of the Indiennes imported in the 18th century by the English and French East India Companies.

T0454001 - Porcelain



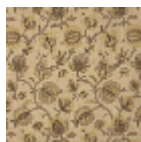
Thorp of London

TYPE	Prints
TECHNIQUE	Screen printed by hand
SALES UNIT	-
GROUND	TS001 - Andrew Natural
COMPOSITION	60 % Cotton - 40 % Jute
NUMBER OF COLORS	4
COLORS	A-// // B-AUBERGINE 129 C-PORCELAIN 361 D-ARMOR 81
DESIGN WIDTH	125 cm / 49,21 inch
REPEAT	H: 41 cm - 16,14 inch V: 77 cm - 30,31 inch
WEIGHT	542 gr / ml
CARE	
INFORMATION	Hand screen printed

3 Colors



T0454001
Porcelain



T0454002
Wheat



T0454003
Calypso