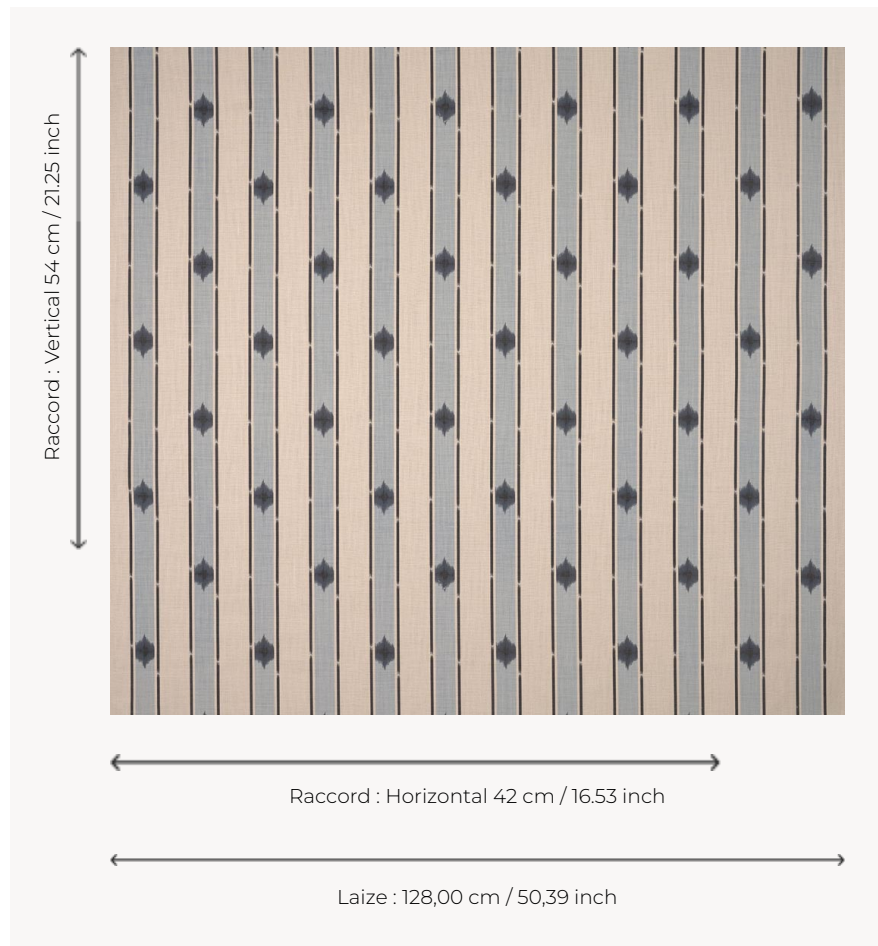


## T0641001 STELLAR STRIPE

Delightful stripes reminiscent of the braids or striped woven fabrics of the late 18th century.

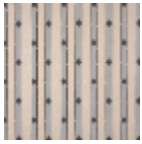
### T0641001 - Anvers



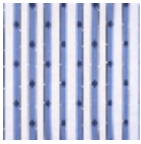
### Thorp of London

|                         |  |
|-------------------------|--|
| <b>TYPE</b>             | Prints   |
| <b>TECHNIQUE</b>        | Screen printed by hand                         |
| <b>SALES UNIT</b>       | -  |
| <b>GROUND</b>           | TS005 - George Sand                            |
| <b>COMPOSITION</b>      | 100 % Linen                                    |
| <b>NUMBER OF COLORS</b> | 2  |
| <b>COLORS</b>           | A-CHARCOAL 187<br>B-ANVERS 399                 |
| <b>DESIGN WIDTH</b>     | 128 cm / 50,39 inch                            |
| <b>REPEAT</b>           | H: 42 cm - 16,53 inch<br>V: 54 cm - 21,25 inch |
| <b>WEIGHT</b>           | 685 gr / ml                                    |
| <b>CARE</b>             |  |
| <b>INFORMATION</b>      | Hand screen printed                            |

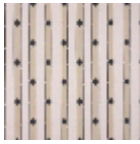
## 5 Colors



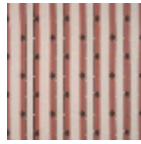
T0641001  
Anvers



T0641002  
Atlantic



T0641003  
Marble



T0641004  
Cameo

T0641005  
CHESTNUT