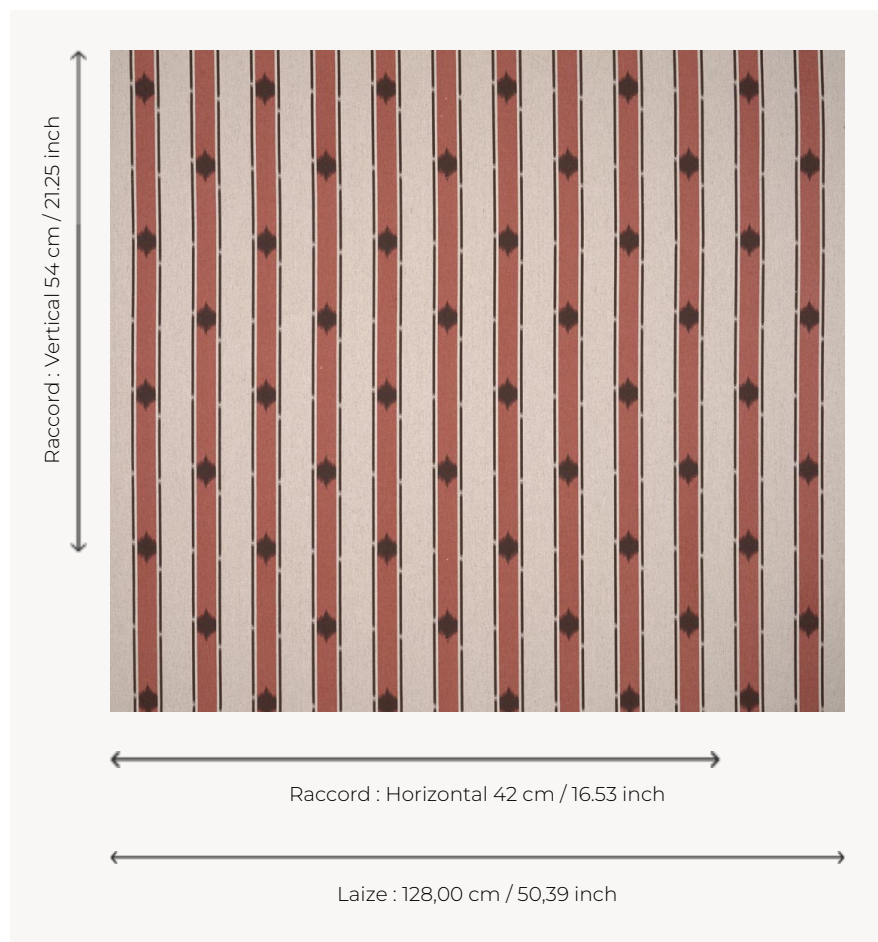


T0641004 STELLAR STRIPE

Delightful stripes reminiscent of the braids or striped woven fabrics of the late 18th century.

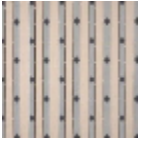
T0641004 - Cameo



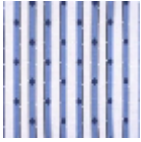
Thorp of London

TYPE	Prints
TECHNIQUE	Screen printed by hand
SALES UNIT	-
GROUND	TS031 - Kathleen Twill Natural
COMPOSITION	70 % Cotton - 30 % Hemp
NUMBER OF COLORS	2
COLORS	A-WALNUT 176 B-CAMEO 227
DESIGN WIDTH	128 cm / 50,39 inch
REPEAT	H: 42 cm - 16,53 inch V: 54 cm - 21,25 inch
WEIGHT	549 gr / ml
CARE	
INFORMATION	Hand screen printed

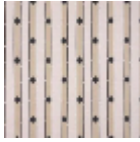
5 Colors



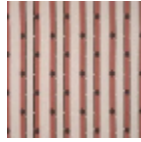
T0641001
Anvers



T0641002
Atlantic



T0641003
Marble



T0641004
Cameo

T0641005
CHESTNUT