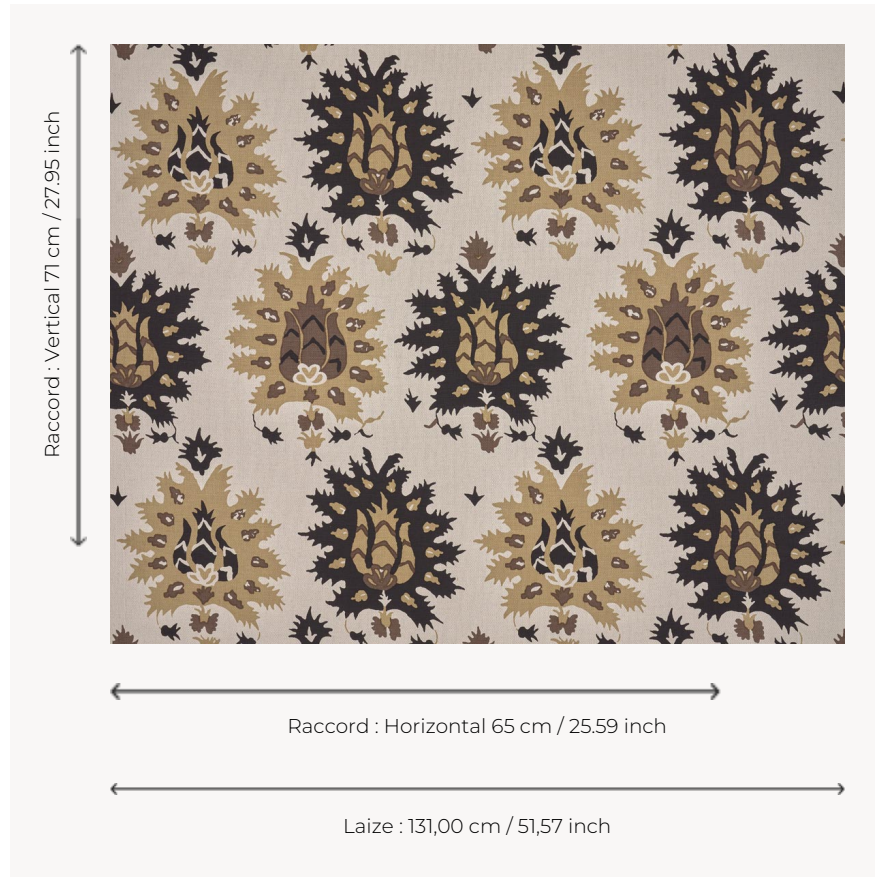


# T0646001 BEL AIR LARGE THORP

These traditional Ottoman motifs take us into the footsteps of Suleiman the Magnificent. BEL AIR LARGE THORP features multi-lobed leaves and stylized pomegranate flowers.

## T0646001 - Coffee



## Thorp of London

TYPE	Prints
TECHNIQUE	Screen printed by hand
SALES UNIT	-
GROUND	TS010 - James Natural
COMPOSITION	55 % Cotton - 45 % Linen
NUMBER OF COLORS	4
COLORS	A-CHESTNUT 118 B-COFFEE 289 C-CHESTNUT 118 D-BLACK 190
DESIGN WIDTH	131 cm / 51,57 inch
REPEAT	H: 65 cm - 25,59 inch V: 71 cm - 27,95 inch
WEIGHT	540 gr / ml
CARE	
INFORMATION	Hand screen printed

3 Colors



T0646001  
Coffee



T0646002  
Cameo



T0646003  
Boudoir