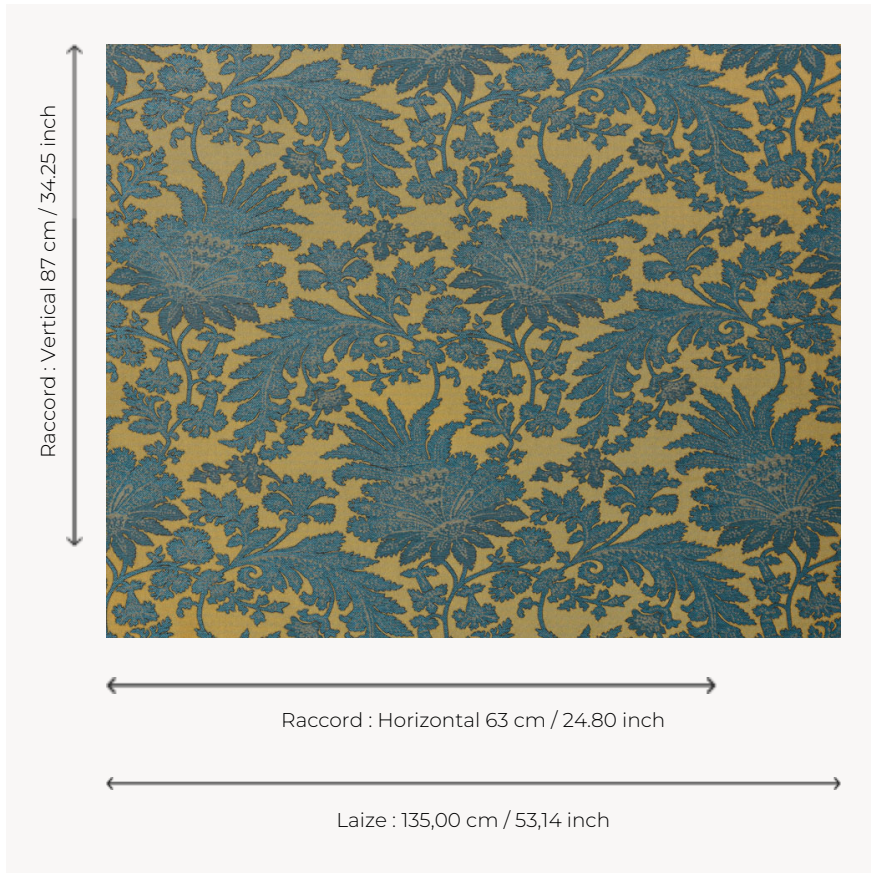


T0702003 MONIQUE

A woven jacquard pattern from the Thorp of London print collection, MONIQUE is inspired by late 18th-century designs.

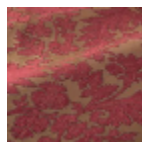
T0702003 - Seablue



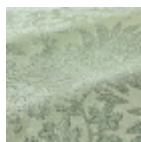
Thorp of London

TYPE	Damask fabrics - Jacquards - Silks & Silky effect fabrics
TECHNIQUE	Jacquard woven
SALES UNIT	Available per meter/yard
COMPOSITION	33 % Viscose - 32 % Cotton - 20 % Silk - 15 % Linen
WARP	TW001 Black cotton
NB OF WEFT COLOURS	2
WEFT	A - SSS BRONZE B - FFY SEA BLUE
DESIGN WIDTH	135 cm / 53,14 inch
REPEAT	H: 63 cm - 24,80 inch V: 87 cm - 34,25 inch Straight repeat
WEIGHT	46 gr / ml
CARE	
NOTES	Reversible
INFORMATION	Natural fiber irregularity

3 Colors



T0702001
Wine



T0702002
Mint



T0702003
Seablue