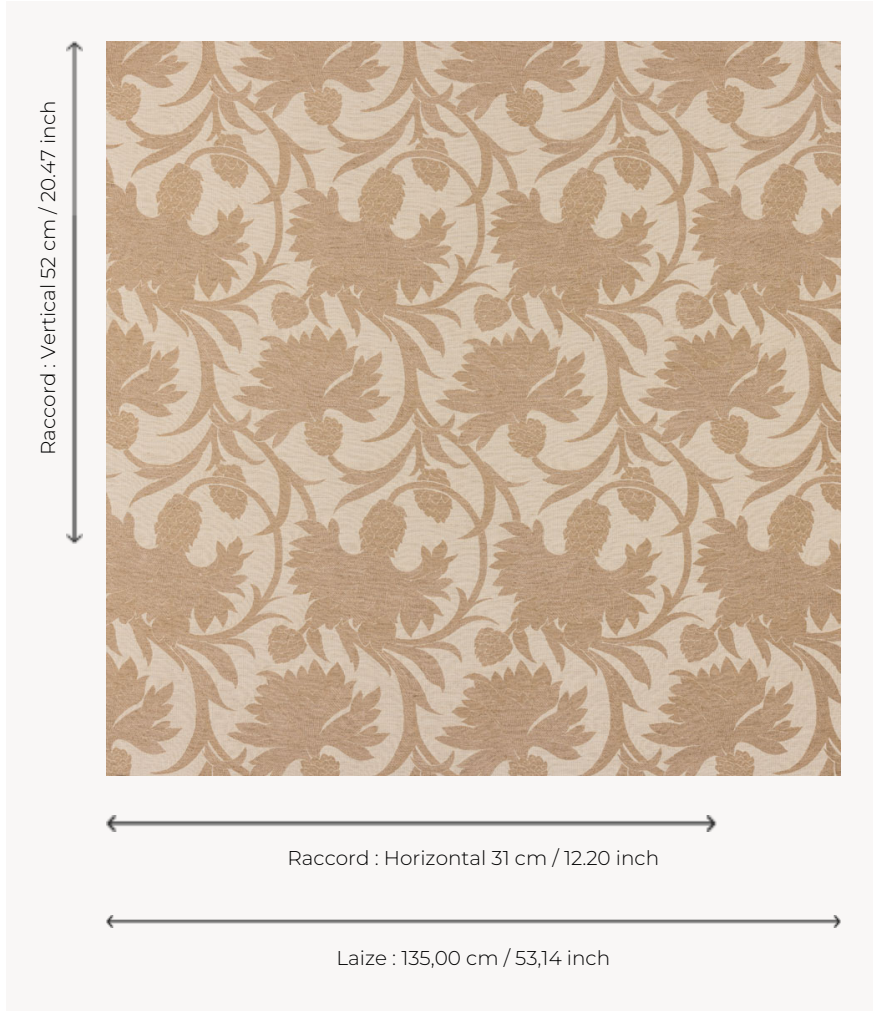


## T0707001 KENSINGTON

Evoking the emblematic symbol of Scotland and the Thorp of London corporate logo, the thistle is woven here in an all-over pattern.

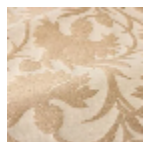
### T0707001 - Taupe



### Thorp of London

<b>TYPE</b>	Damask fabrics - Jacquards
<b>TECHNIQUE</b>	Jacquard woven
<b>SALES UNIT</b>	Available per meter/yard
<b>COMPOSITION</b>	53 % Cotton - 33 % Viscose - 14 % Linen
<b>WARP</b>	TW003 Beige cotton
<b>NB OF WEFT COLOURS</b>	2
<b>WEFT</b>	A - CCY HONEY / CYAN B - FFY TAUPE
<b>DESIGN WIDTH</b>	135 cm / 53,14 inch
<b>REPEAT</b>	H: 31 cm - 12,20 inch V: 52 cm - 20,47 inch Straight repeat
<b>WEIGHT</b>	36 gr / ml
<b>CARE</b>	
<b>INFORMATION</b>	Natural fiber irregularity

### 3 Colors



T0707001  
Taupe



T0707002  
Marble



T0707003  
Celery