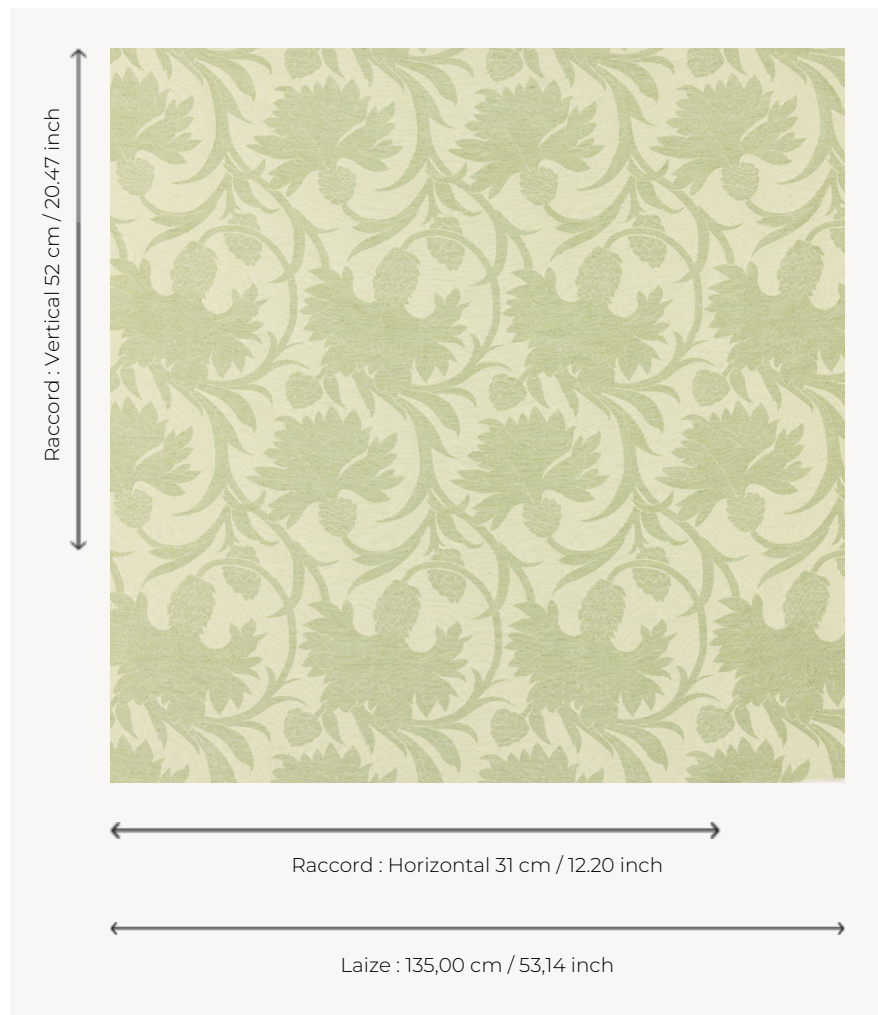


T0707003 KENSINGTON

Evoking the emblematic symbol of Scotland and the Thorp of London corporate logo, the thistle is woven here in an all-over pattern.

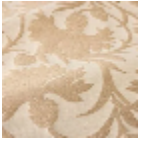
T0707003 - Celery



Thorp of London

TYPE	Damask fabrics - Jacquards
TECHNIQUE	Jacquard woven
SALES UNIT	Available per meter/yard
COMPOSITION	53 % Cotton - 33 % Viscose - 14 % Linen
WARP	TW002 Natural cotton
NB OF WEFT COLOURS	2
WEFT	A - CCY FENNEL / BLEACHED B - FFY VAUX / CELERY
DESIGN WIDTH	135 cm / 53,14 inch
REPEAT	H: 31 cm - 12,20 inch V: 52 cm - 20,47 inch Straight repeat
WEIGHT	36 gr / ml
CARE	
INFORMATION	Natural fiber irregularity

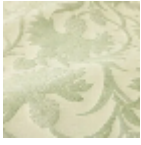
3 Colors



T0707001
Taupe



T0707002
Marble



T0707003
Celery