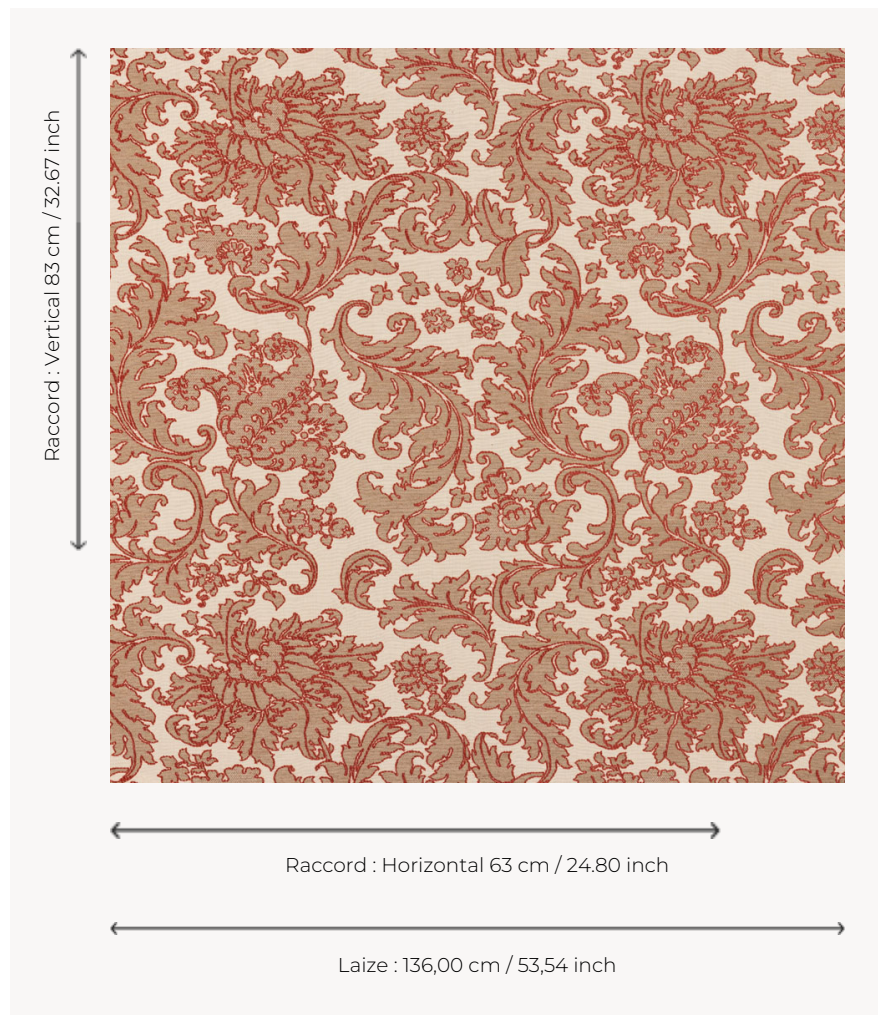


T0708001 KNIGHTSBRIDGE

This rocaille-inspired jacquard features a scrolling motif of big stylized flowers and acanthus leaves, typical of Louis XV period compositions.

T0708001 - Coral



Thorp of London

TYPE	Chenille - Damask fabrics - Fibres douces - Jacquards
TECHNIQUE	Jacquard woven
SALES UNIT	Available per meter/yard
COMPOSITION	66 % Cotton - 22 % Viscose - 9 % Linen - 3 % Polyester
WARP	TW002 Natural cotton
NB OF WEFT COLOURS	3
WEFT	A - CCY ECRU / STONE B - FFY NUTMEG / GRANARY C - CFY CORAL / PPY RED
DESIGN WIDTH	136 cm / 53,54 inch
REPEAT	H: 63 cm - 24,80 inch V: 83 cm - 32,67 inch Straight repeat
WEIGHT	29 gr / ml
CARE	
INFORMATION	Natural fiber irregularity

3 Colors



T0708001
Coral



T0708002
Moss



T0708003
Corsican