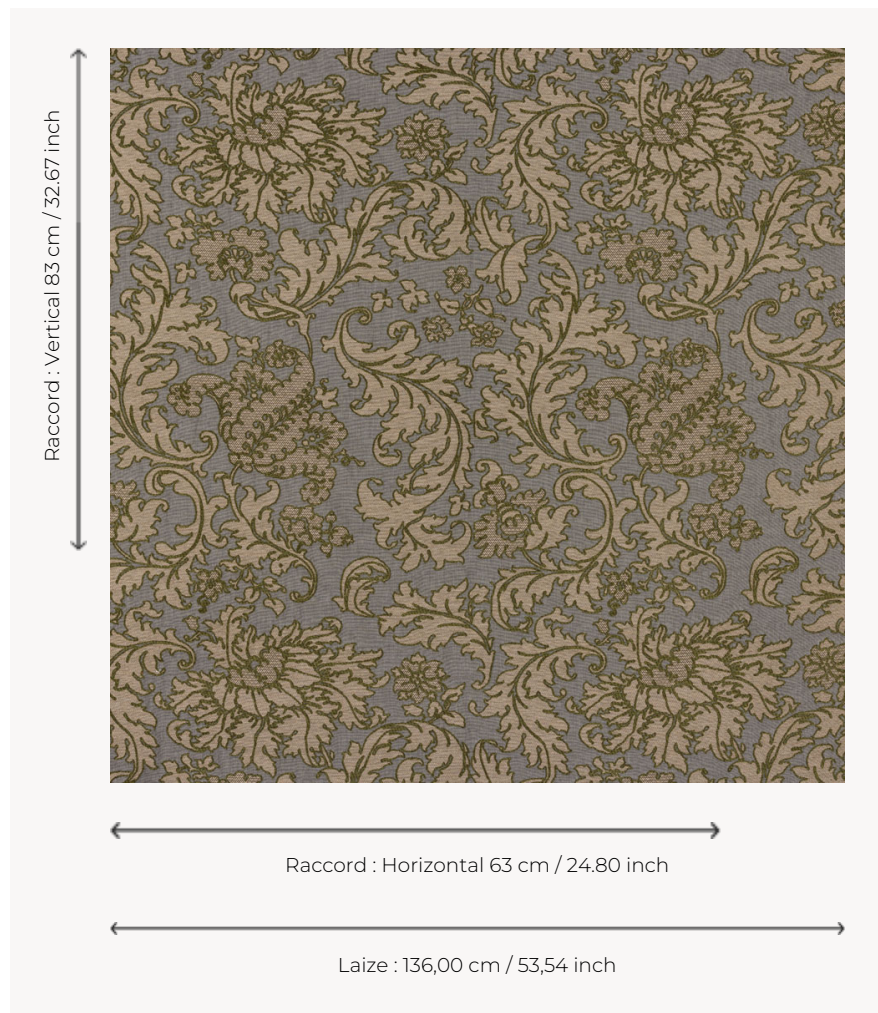


## T0708002 KNIGHTSBRIDGE

This rocaille-inspired jacquard features a scrolling motif of big stylized flowers and acanthus leaves, typical of Louis XV period compositions.

### T0708002 - Moss



### Thorp of London

<b>TYPE</b>	Chenille - Damask fabrics - Fibres douces - Jacquards
<b>TECHNIQUE</b>	Jacquard woven
<b>SALES UNIT</b>	Available per meter/yard
<b>COMPOSITION</b>	66 % Cotton - 22 % Viscose - 9 % Linen - 3 % Polyester
<b>WARP</b>	TW001 Black cotton
<b>NB OF WEFT COLOURS</b>	3
<b>WEFT</b>	A - CCY BLEACHED / CYAN B - FFY HEMP BEIGE / TAUPE C - CFY MOSS / PPY OLIVE
<b>DESIGN WIDTH</b>	136 cm / 53,54 inch
<b>REPEAT</b>	H: 63 cm - 24,80 inch V: 83 cm - 32,67 inch Straight repeat
<b>WEIGHT</b>	29 gr / ml
<b>CARE</b>	
<b>INFORMATION</b>	Natural fiber irregularity

## 3 Colors



T0708001  
Coral



T0708002  
Moss



T0708003  
Corsican