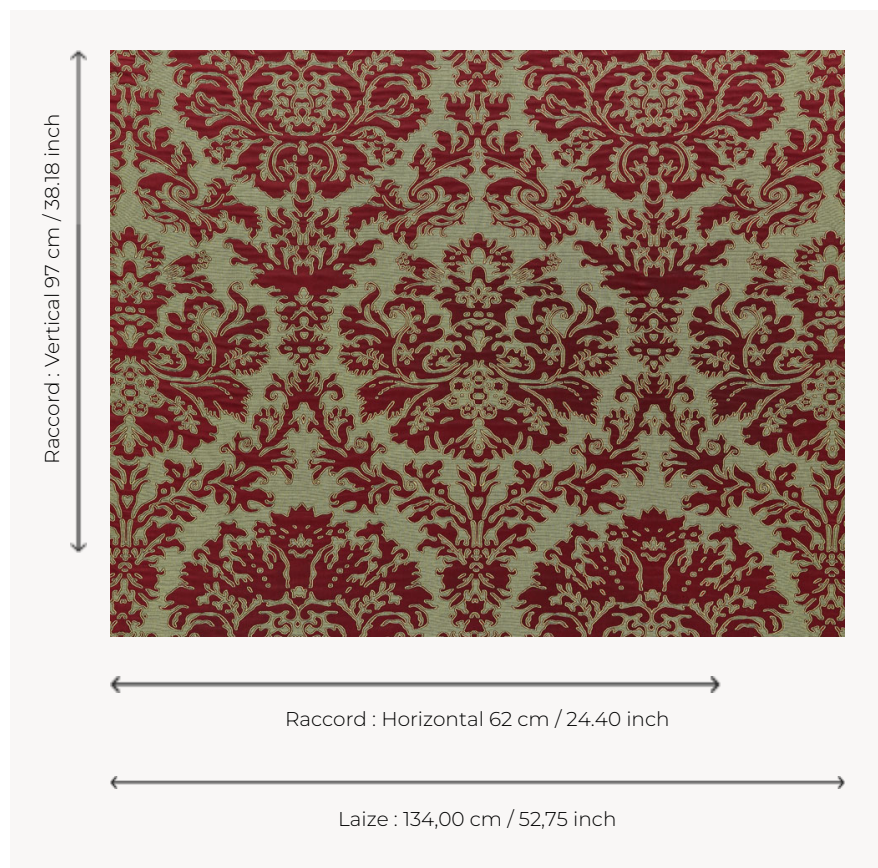


T0709001 OUTLINE DAMASK

OUTLINE DAMASK is a stylized floral composition reminiscent of early 17th-century compositions.

T0709001 - Kenya red



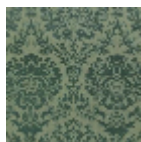
Thorp of London

TYPE	Damask fabrics - Jacquards
TECHNIQUE	Jacquard woven
SALES UNIT	Available per meter/yard
COMPOSITION	84 % Cotton - 16 % Silk
WARP	TW001 Black cotton
NB OF WEFT COLOURS	2
WEFT	A - CCY LEAF / FENNEL B - SSY KENYA
DESIGN WIDTH	134 cm / 52,75 inch
REPEAT	H: 62 cm - 24,40 inch V: 97 cm - 38,18 inch Straight repeat
WEIGHT	54 gr / ml
CARE	
NOTES	Reversible
INFORMATION	Pocket weave

3 Colors



T0709001
Kenya red



T0709002
Lichen



T0709003
Champagne