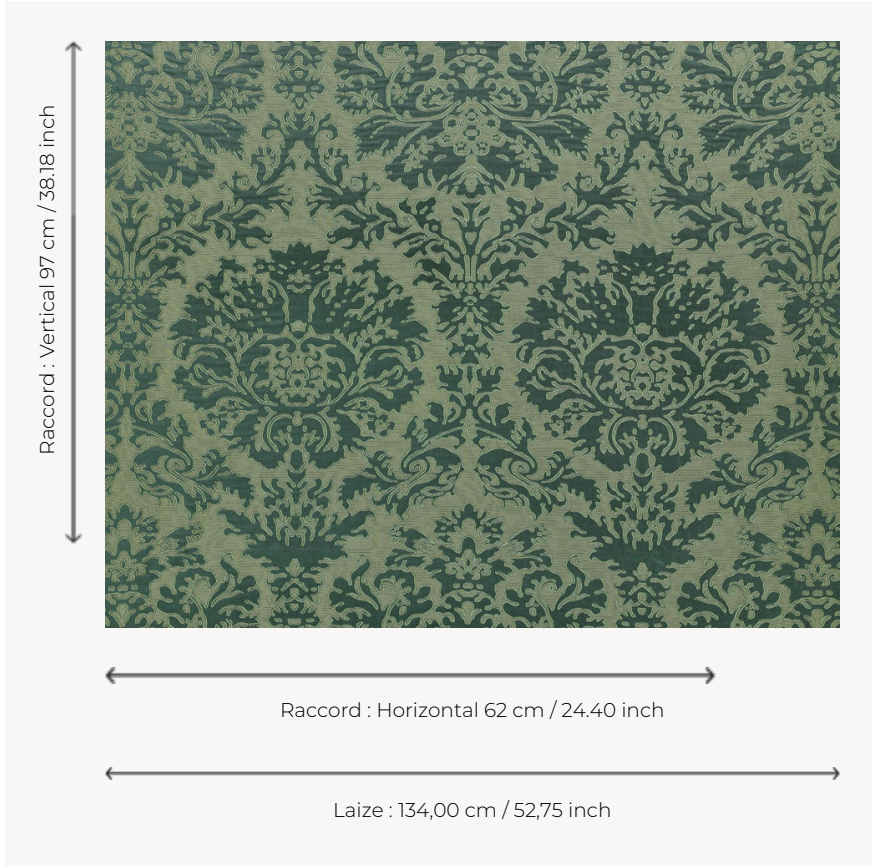


## T0709002 OUTLINE DAMASK

OUTLINE DAMASK is a stylized floral composition reminiscent of early 17th-century compositions.

### T0709002 - Lichen



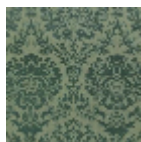
### Thorp of London

<b>TYPE</b>	Damask fabrics - Jacquards
<b>TECHNIQUE</b>	Jacquard woven
<b>SALES UNIT</b>	Available per meter/yard
<b>COMPOSITION</b>	84 % Cotton - 16 % Silk
<b>WARP</b>	TW001 Black cotton
<b>NB OF WEFT COLOURS</b>	2
<b>WEFT</b>	A - CCY LICHEN / LEAF B - SSY ALGAE
<b>DESIGN WIDTH</b>	134 cm / 52,75 inch
<b>REPEAT</b>	H: 62 cm - 24,40 inch V: 97 cm - 38,18 inch Straight repeat
<b>WEIGHT</b>	54 gr / ml
<b>CARE</b>	
<b>NOTES</b>	Reversible
<b>INFORMATION</b>	Pocket weave

### 3 Colors



T0709001  
Kenya red



T0709002  
Lichen



T0709003  
Champagne