

T0710002 ROYAL COURT DAMASK

This jacquard finely reproduces the splendor of the "jardinière" ciselé velvets prized during the reign of Louis XIV.

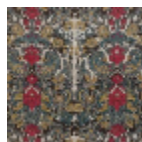
T0710002 - Seablue



Thorp of London

TYPE	Chenille - Fibres douces - Ikats - Jacquards
TECHNIQUE	Jacquard woven
SALES UNIT	Available per meter/yard
COMPOSITION	62 % Cotton - 13 % Viscose - 11 % Polyester - 8 % Silk - 6 % Linen
WARP	TW002 Natural cotton
NB OF WEFT COLOURS	4
WEFT	A - SSY PUTTY / MUSHROOM B - FFY SEABLUE / PPY TARTAN C - CFY BEIGE / PPY OLD GOLD D - CFY RASPBERRY / PPY MAROON
DESIGN WIDTH	133 cm / 52,36 inch
REPEAT	H: 62 cm - 24,40 inch V: 85 cm - 33,46 inch Straight repeat
WEIGHT	28 gr / ml
CARE	
INFORMATION	Natural fiber irregularity

2 Colors



T0710001
Black



T0710002
Seablue