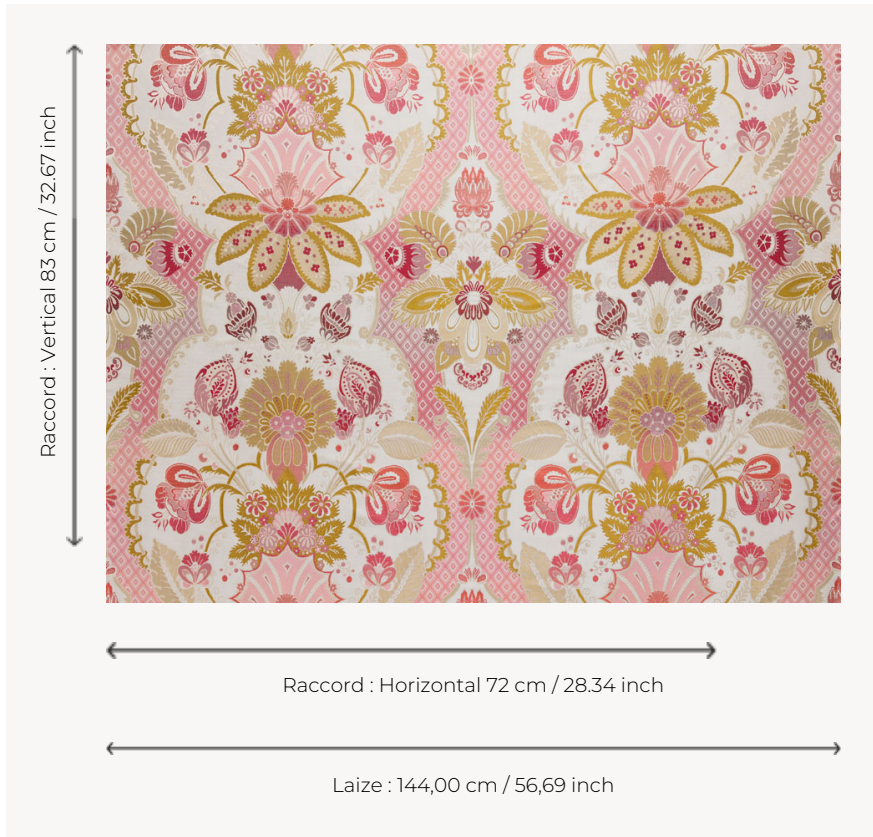


T0717002 REGALIA SILK

REGALIA SILK revisits a sumptuous lace-decorated silk lampas so popular during the Regency of Philippe d'Orléans.

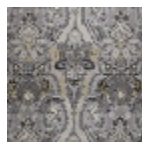
T0717002 - Tomato



Thorp of London

TYPE	Jacquards
TECHNIQUE	Jacquard woven
SALES UNIT	Available per meter/yard
COMPOSITION	89 % Silk - 11 % Polyester
WARP	TW009 Honey silk
NB OF WEFT COLOURS	3
WEFT	A - SSY CLOUD B - SSY MOSS C - SSY KENYA / PPY RED / PPY TOMATO / SSY CAMPARI
DESIGN WIDTH	144 cm / 56.69 inch
REPEAT	H: 72 cm - 28.34 inch V: 83 cm - 32.67 inch Straight repeat
WEIGHT	99 gr / ml
CARE	

2 Colors



T0717001
Silver



T0717002
Tomato