

T0721001 EDINBURGH

EDINBURGH's magnificent design of sinuous flowering branches is a trompe-l'œil reproduction of the spectacular Crewel embroidery dating from the 17th century.

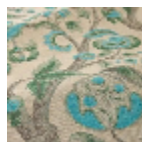
T0721001 - Hemp



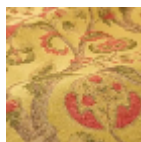
Thorp of London

TYPE	Chenille - Fibres douces - Jacquards
TECHNIQUE	Jacquard woven
SALES UNIT	Available per meter/yard
COMPOSITION	76 % Cotton - 17 % Viscose - 7 % Linen
WARP	TW004 Black & White cotton
NB OF WEFT COLOURS	5
WEFT	A - FFY HEMP B - CCY BARK C - CCY PINE / EMERALD D - CFY TEAL E - CCY KINGFISHER
DESIGN WIDTH	135 cm / 53,14 inch
REPEAT	H: 62 cm - 24,40 inch V: 87 cm - 34,25 inch Straight repeat
WEIGHT	25 gr / ml
CARE	
INFORMATION	Natural fiber irregularity

2 Colors



T0721001
Hemp



T0721002
Old gold