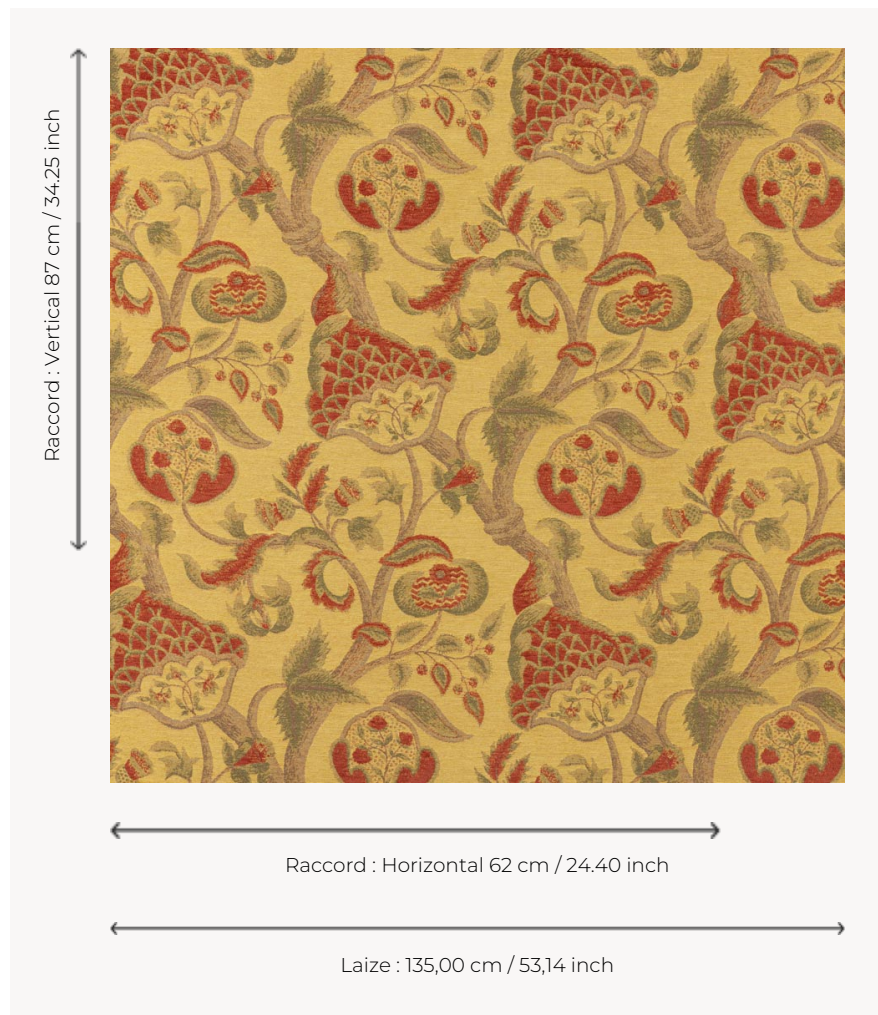


T0721002 EDINBURGH

EDINBURGH's magnificent design of sinuous flowering branches is a trompe-l'œil reproduction of the spectacular Crewel embroidery dating from the 17th century.

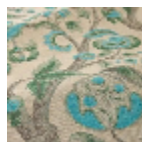
T0721002 - Old gold



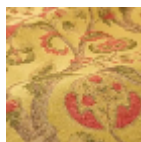
Thorp of London

| | |
|---------------------------|---|
| TYPE | Chenille - Fibres douces - Jacquards |
| TECHNIQUE | Jacquard woven |
| SALES UNIT | Available per meter/yard |
| COMPOSITION | 76 % Cotton - 17 % Viscose - 7 % Linen |
| WARP | TW003 Beige cotton |
| NB OF WEFT COLOURS | 5 |
| WEFT | A - FFY OLD GOLD B - CCY COFFEE C - CCY CACTUS D - CFY CORAL E - CCY RUST |
| DESIGN WIDTH | 135 cm / 53,14 inch |
| REPEAT | H: 62 cm - 24,40 inch V: 87 cm - 34,25 inch Straight repeat |
| WEIGHT | 25 gr / ml |
| CARE | |
| INFORMATION | Natural fiber irregularity |

2 Colors



T0721001
Hemp



T0721002
Old gold