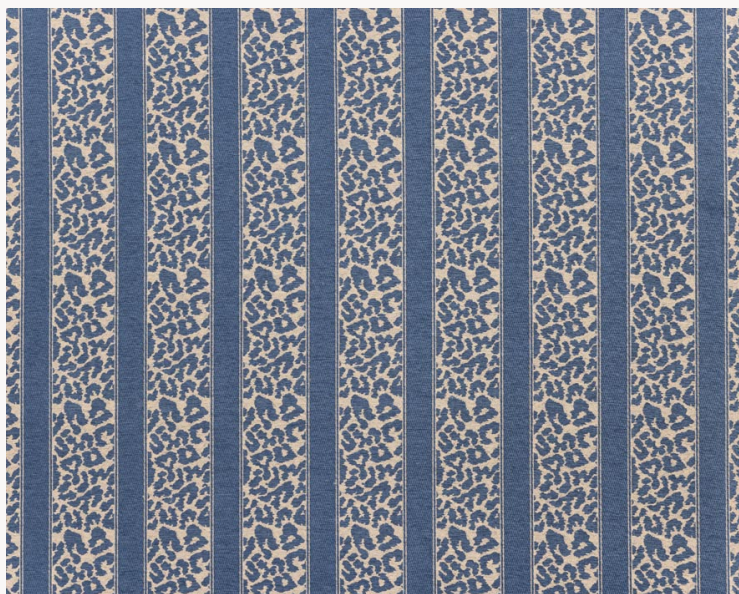


T0725004 LEOPARD STRIPE

The leopard pattern invites itself into this classically rhythmic stripe, as a tribute to the 18th century, when fashion appropriated this ocellated pattern.

T0725004 - Royal



Raccord : Horizontal 15 cm / 5.90 inch



Laize : 134,00 cm / 52,75 inch

Thorp of London

TYPE	Chenille - Jacquards
TECHNIQUE	Jacquard woven
SALES UNIT	Available per meter/yard
COMPOSITION	76 % Cotton - 17 % Viscose - 7 % Linen
WARP	TW004 Black & White cotton
NB OF WEFT COLOURS	3
WEFT	A - CCY STONE / FFY PARCHMENT B - CFY NAVY / ROYAL C - CCY STONE / FFY PARCHMENT
DESIGN WIDTH	134 cm / 52,75 inch
REPEAT	H: 15 cm - 5,90 inch Straight repeat
WEIGHT	26 gr / ml
CARE	
INFORMATION	Stripes parallel to selvages Natural fiber irregularity

4 Colors



T0725001
Espresso



T0725002
Wheat



T0725003
Raspberry



T0725004
Royal