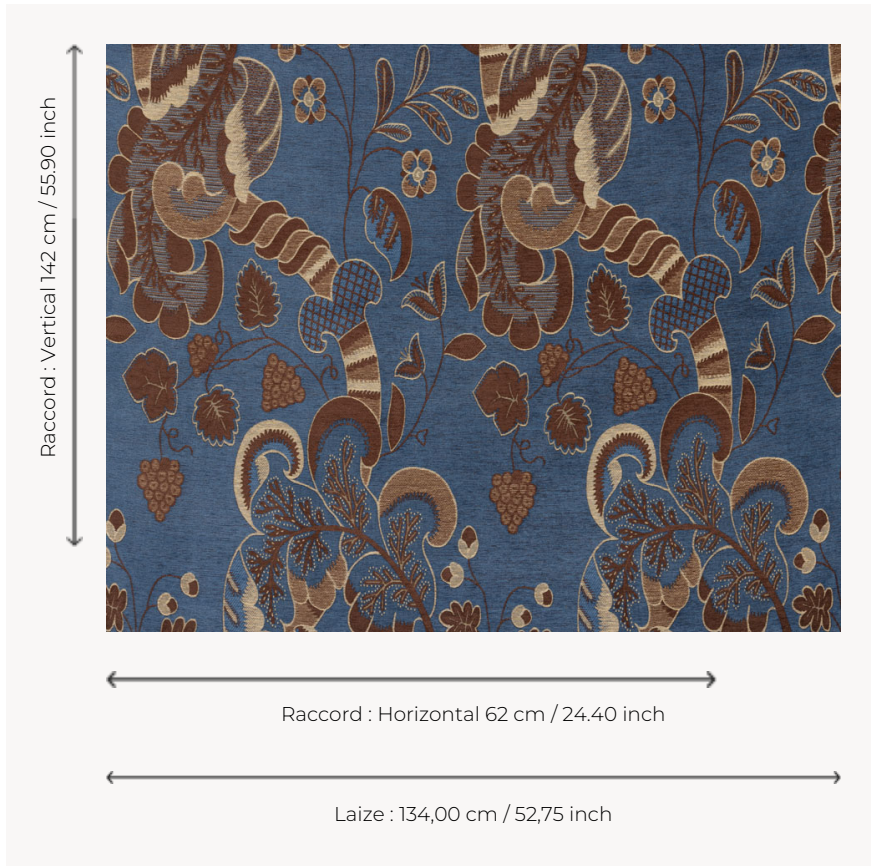


T0729002 TAPESTRY CREWEL

This jacquard elegantly reinterprets the refinement of the Crewel embroideries popular during the reign of the Scottish Stuart dynasty.

T0729002 - Royal



Thorp of London

TYPE	Chenille - Fibres douces - Jacquards
TECHNIQUE	Jacquard woven
SALES UNIT	Available per meter/yard
COMPOSITION	76 % Cotton - 17 % Viscose - 7 % Linen
WARP	TW001 Black cotton
NB OF WEFT COLOURS	3
WEFT	A - CFY ROYAL / CCY DARK BLUE B - CFY ESPRESSO / CCY COFFEE C - FFY PARCHMENT
DESIGN WIDTH	134 cm / 52,75 inch
REPEAT	H: 62 cm - 24,40 inch V: 142 cm - 55,90 inch Straight repeat
WEIGHT	25 gr / ml
CARE	
INFORMATION	Natural fiber irregularity

3 Colors



T0729001
Muscat



T0729002
Royal



T0729003
Coral