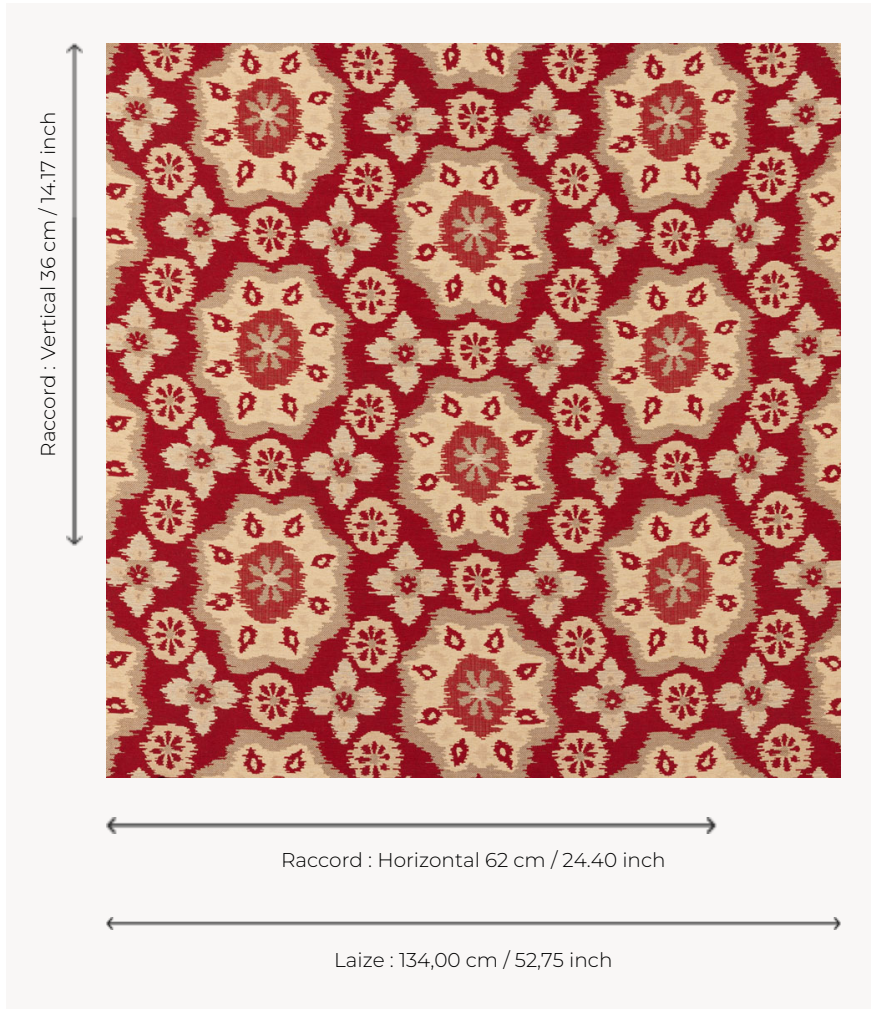


T0730001 FLORAL TILE

With its wide oriental rosette pattern, FLORAL TILE evokes the ikats of the silk road.

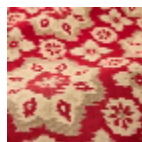
T0730001 - Ogee red



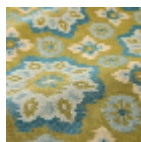
Thorp of London

TYPE	Jacquards
TECHNIQUE	Jacquard woven
SALES UNIT	Available per meter/yard
COMPOSITION	51 % Cotton - 34 % Viscose - 15 % Linen
WARP	TW004 Black & White cotton
NB OF WEFT COLOURS	3
WEFT	A - CCY OGEE RED B - FFY GRANARY C - FFY PARCHMENT
DESIGN WIDTH	134 cm / 52,75 inch
REPEAT	H: 62 cm - 24,40 inch V: 36 cm - 14,17 inch Straight repeat
WEIGHT	33 gr / ml
CARE	
INFORMATION	Natural fiber irregularity

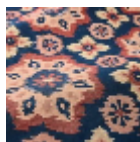
3 Colors



T0730001
Ogee red



T0730002
Leaf



T0730003
Dark navy