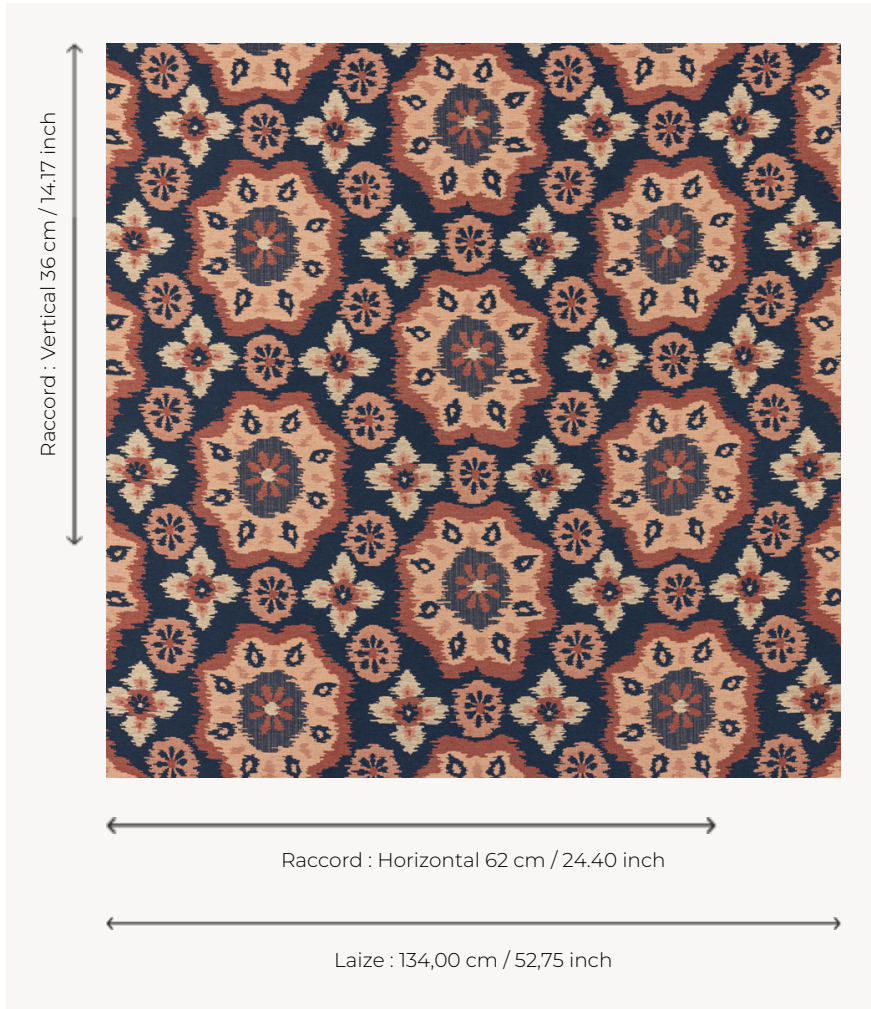


## T0730003 FLORAL TILE

With its wide oriental rosette pattern, FLORAL TILE evokes the ikats of the silk road.

### T0730003 - Dark navy



### Thorp of London

|                           |   |
|---------------------------|---|
| <b>TYPE</b>               | Jacquards   |
| <b>TECHNIQUE</b>          | Jacquard woven  |
| <b>SALES UNIT</b>         | Available per meter/yard  |
| <b>COMPOSITION</b>        | 51 % Cotton - 34 % Viscose - 15 % Linen                           |
| <b>WARP</b>               | TW004 Black & White cotton  |
| <b>NB OF WEFT COLOURS</b> | 3   |
| <b>WEFT</b>               | A - CCY DARK BLUE<br>B - FFY NEVADA<br>C - FFY PARCHMENT          |
| <b>DESIGN WIDTH</b>       | 134 cm / 52,75 inch   |
| <b>REPEAT</b>             | H: 62 cm - 24,40 inch<br>V: 36 cm - 14,17 inch<br>Straight repeat |
| <b>WEIGHT</b>             | 33 gr / ml  |
| <b>CARE</b>               |   |
| <b>INFORMATION</b>        | Natural fiber irregularity  |

## 3 Colors



T0730001  
Ogee red



T0730002  
Leaf



T0730003  
Dark navy