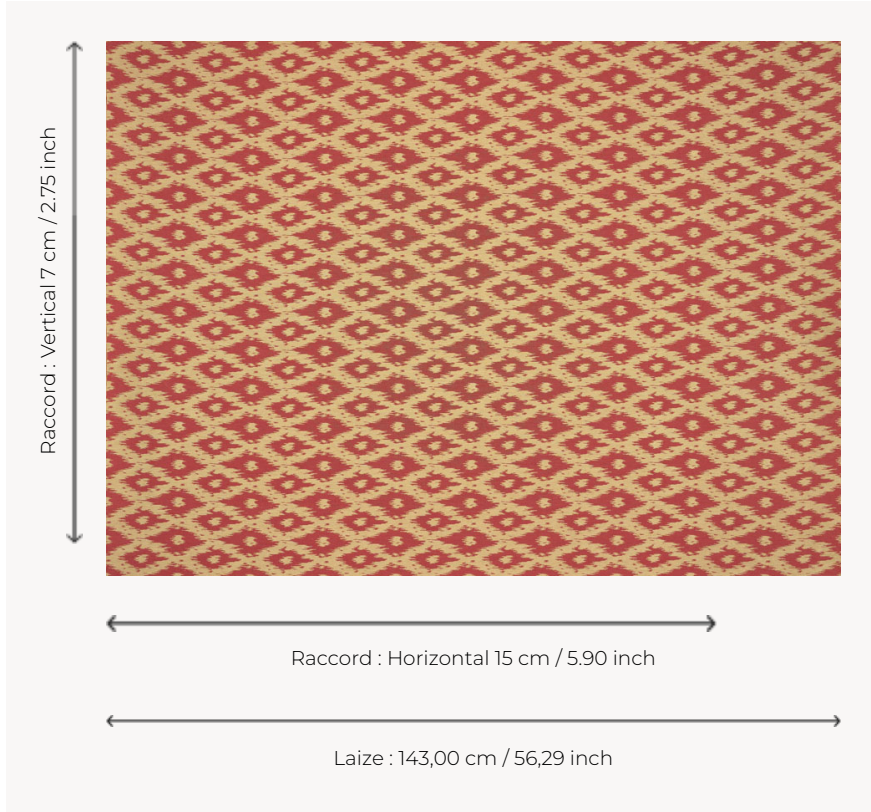


T0734001 MAJORCA

MAJORCA features an irregular diamond ikat pattern reminiscent of the finest Uzbek caftans.

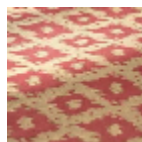
T0734001 - New tomato



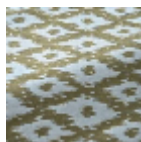
Thorp of London

TYPE	Jacquards
TECHNIQUE	Jacquard woven
SALES UNIT	Available per meter/yard
COMPOSITION	83 % Cotton - 17 % Polyester
WARP	TW006 White polyester
NB OF WEFT COLOURS	2
WEFT	A - CCY NEW TOMATO / DEEP RED B - CCY STONE / BEIGE
DESIGN WIDTH	143 cm / 56,29 inch
REPEAT	H: 15 cm - 5,90 inch V: 7 cm - 2,75 inch Straight repeat
WEIGHT	47 gr / ml
CARE	
NOTES	Reversible

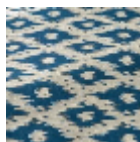
3 Colors



T0734001
New tomato



T0734002
Aqua



T0734003
Azure